

### Approval process

The Department has now completed the visit schedule for the 2011-2012 academic year. 65 visits (covering 111 programmes) were conducted. 41% of programmes visited were from professions new to the register (practitioner psychologists and hearing aid dispensers); 36% were to existing programmes (34% due to major changes and 2% due to annual monitoring) and 23% were to new programmes (covering nine professions/entitlements).

All visits to practitioner psychologists and hearing aid dispensers' programmes, which transferred from previous registers in 2009 and 2010 respectively, have now been concluded. The Department will now review these approval visits specifically for incorporation into the next annual report.

The Department continues to schedule visits for the 2012-2013 academic year. To date, 19 visits (covering 36 programmes) have been scheduled. There are a 20 known social worker visits (covering 93 programmes) to confirm. The deadline for finalising visits in 2012-2013 academic year is December 2012.

### Annual monitoring process

The Department has completed the majority of the annual monitoring work for the 2011-2012 academic year. The last submission deadline for the 2011-2012 academic year is 30 September 2012, so it is anticipated that the November Education and Training Panel will formally close off annual monitoring for the 2011-2012 academic year. The following table gives a progress report on all annual monitoring audit submissions. To date, all decisions have been 'continue to meet our standards'. There have been no triggers to the approval process.

Method of assessment	Date	Number of programmes considered	Number of decisions complete	Number of decisions outstanding
Assessment day	28 Feb 2012	29	29	0
Assessment day	28 March 2012	33	33	0
Assessment day	31 May 2012	46	46	0
Assessment day	29 May 2012	43	43	0
Assessment day	31 May 2012			
Postal	Nov-11	3	3	0
Postal	Dec-11	1	1	0
Postal	Mar-12	1	1	0
Postal	Apr-12	2	2	0
Postal	May-12	14	14	0
Postal	Jun-12	4	2	2
Postal	Jul-12	1	0	1
Postal	Aug-12	1	0	1
Postal	Sep-12	2	0	2

The Department has now begun the planning process for annual monitoring in the 2012-2013 academic year. It is anticipated that there will be six annual monitoring assessment days this year, as the number of programmes in annual monitoring grows due to the impact of practitioner psychologists and hearing aid dispenser programmes.

### Major change process

The number of major change notifications received since June continues to be slightly higher than anticipated. A significant proportion (35%) of these continues to be channelled into the approval and annual monitoring processes. The number that remains within the major change process is slightly higher than predicted.

The total number of major change notifications received in the 2011-2012 academic year was 178, covering 253 programmes. This figure is comparable with the academic year, with the main variation being in the phasing – i.e. the pronounced peaks and trough were at different times of the year.

### Complaints process

The Department has received one new complaint since the last Committee meeting. The issues raised were outside of the HCPC’s remit so we were unable to investigate. There are currently no outstanding complaints.

See appendix one for more information on the above operational processes.

A detailed analysis of the activities of the 2011-2012 academic year, across all operational processes, will begin shortly, culminating in the next annual report.

### Social workers in England / Approved Mental Health Professionals (AMHPs)

All Education specific data was successfully migrated from the General Social Care Council (GSCC) into our information systems prior to the transfer of the Register. The register of approved programmes (current and historic) went live on 1 August 2012.

Three introductory seminars for social work education providers were held in June and July 2012, with approximately 130 attendees in total. In general, attendees were positive and felt prepared for the transfer to HCPC. There was a degree of uncertainty around the relationship with the professional body (The College of Social Work, TCSW), both in terms of the interaction between education providers and TCSW and the interaction between TCSW and the HCPC.

Detailed mailings were sent to all social work and AMHP education providers on 1 August 2012. These included information on the visit schedule, how we communicate with education providers and the suitability scheme as well as a selection of updated HCPC publications. Sufficient copies of the publication ‘Guidance on conduct and ethics for students’ was also sent to all social work education providers for forwarding onto current and incoming students.

The visit schedules for social work and AMHP programmes were finalised and published. The visit schedule for social work programmes was based on a combination of the following factors – the GSCC quality assurance evidence and assessment at the point of transfer; the existing GSCC re-approval cycle; the demand for placements within regions; the size and frequency of student cohorts and the entire provision within each education provider. There was no one key determining factor. The schedule covers three academic years and will be implemented with a degree of flexibility. Education providers have been asked to respond with specific visit dates by 31 January 2013.

The visit schedule for AMHP programmes was based solely on the existing GSCC re-approval cycle. The schedule covers two academic years (starting in 2013-14) and will be implemented with a degree of flexibility. Education providers have also been asked to respond with specific visit dates by 31 January 2013.

The table below provides a summary of the visit schedules;

Academic year	2012-13	2013-14	2014-15	Total
<b>Social work programmes</b>				
Number of education providers	20	37	28	85
Number of programmes	93	129	58	280
AMHP programmes				

Number of education providers	0	12	14	26
Number of programmes	0	11	16	27
<b>Total numbers</b>				
Number of visits	20	49	42	111
Number of programmes visited	93	140	74	307

The social work student suitability scheme in England became effective on 1 August 2012. The scheme was communicated to education providers via the seminars, mailings and the website. Specific mailings were also made to social work employers and stakeholders, to target them in their role as placement providers.

### Partners

The Department is preparing for a period of visitor recruitment in November and December 2012. This recruitment includes backfilling existing professions as well preparing for new areas of work. The following professions/programmes will take be recruited to –

- Drama therapists
- Clinical scientists
- Occupational therapists
- Diagnostic radiographers
- Therapeutic radiographers
- Approved mental health professionals
- Independent prescribing

New visitor training will then be held in spring 2013 for the successful candidates.

The Department is also preparing for the annual round of visitor refresher training in October and November 2012. It is anticipated that approximately 90 visitors will attend sessions.

### Education seminars

The Department has begun the organisation of the annual round of education seminars for autumn/winter 2012. There will be nine seminars in total. Three seminars will be specifically for social worker education providers (SW) and will focus on the approval process. The remaining six seminars will be open to all professions, including social workers, and based on seminars run in previous years. Three of the seminars will focus on student conduct and ethics (SCE) and the other three on practice placements (PP). Dates and locations for these seminars are as follows:

Date	Location	Area
3 October 2012	London	SW
4 October 2012	London	SCE
11 October 2012	Liverpool	SW
29 November 2012	Newcastle	PP
6 December 2012	Leeds	SW
11 December 2012	Belfast	SCE
24 January 2013	Edinburgh	PP
31 January 2013	Cardiff	SCE
1 February 2013	London	PP

### Publications

The Department has reviewed and amended all Education specific publications in light of the name change on 1 August 2012. A number of these updated publications will be included with the next edition of the Education Update in October 2012.

Following approval at the last Committee meeting in June 2012, the Education Annual Report 2011 will be published at the end of this month and made available to stakeholders via Education Update and our website.

The advertising guidelines for education providers have been updated to provide advice on how to make reference to HCPC approval in Diploma Supplements and the Higher Education Achievement Report (HEAR).

### **Liaison with stakeholders**

The eleventh issue of the Education Update is due to be distributed to education providers, visitors and other education stakeholders in week commencing 1 October 2012 and will be made available on the HCPC website at: <http://www.hcpc-uk.org/education/update/>

Members of the Department met with the following groups between June – September 2012:

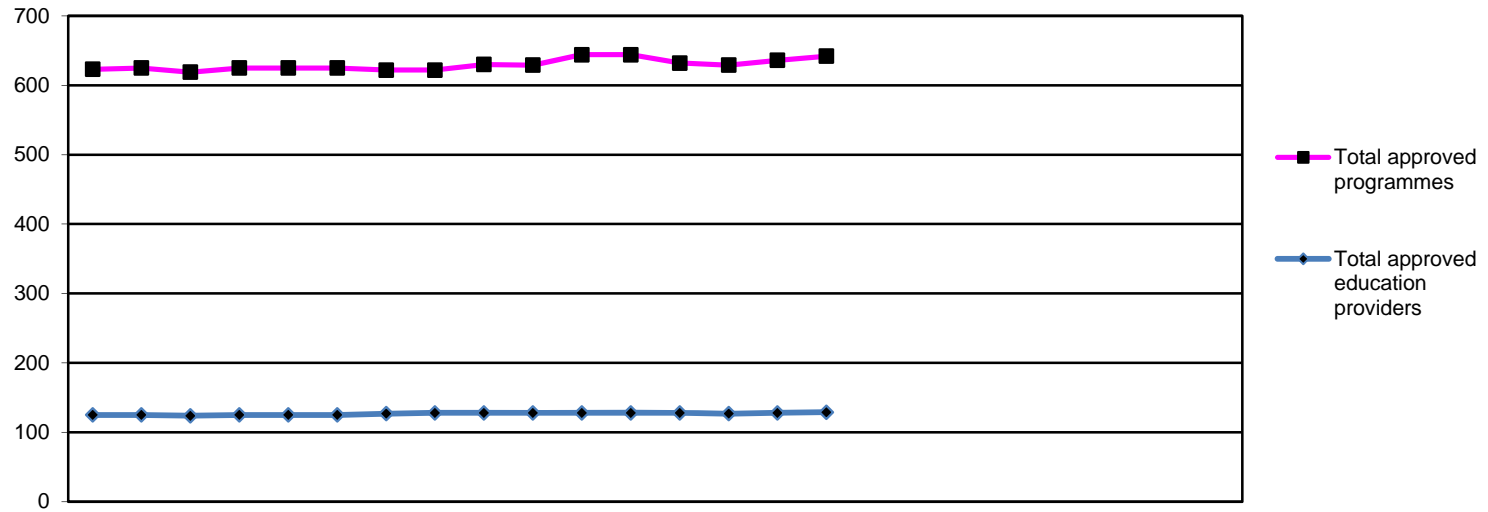
- Initial Training of Educational Psychologists (ITEP) National Steering Group
- The Education Inter-Regulatory Group
- The General Social Care Council
- The Quality Assurance Agency
- The Nursing and Midwifery Council
- Heads of University Centres of Biomedical Science (HUCBMS)
- The Department for Education (Social Work Workforce Team)

### **Employees**

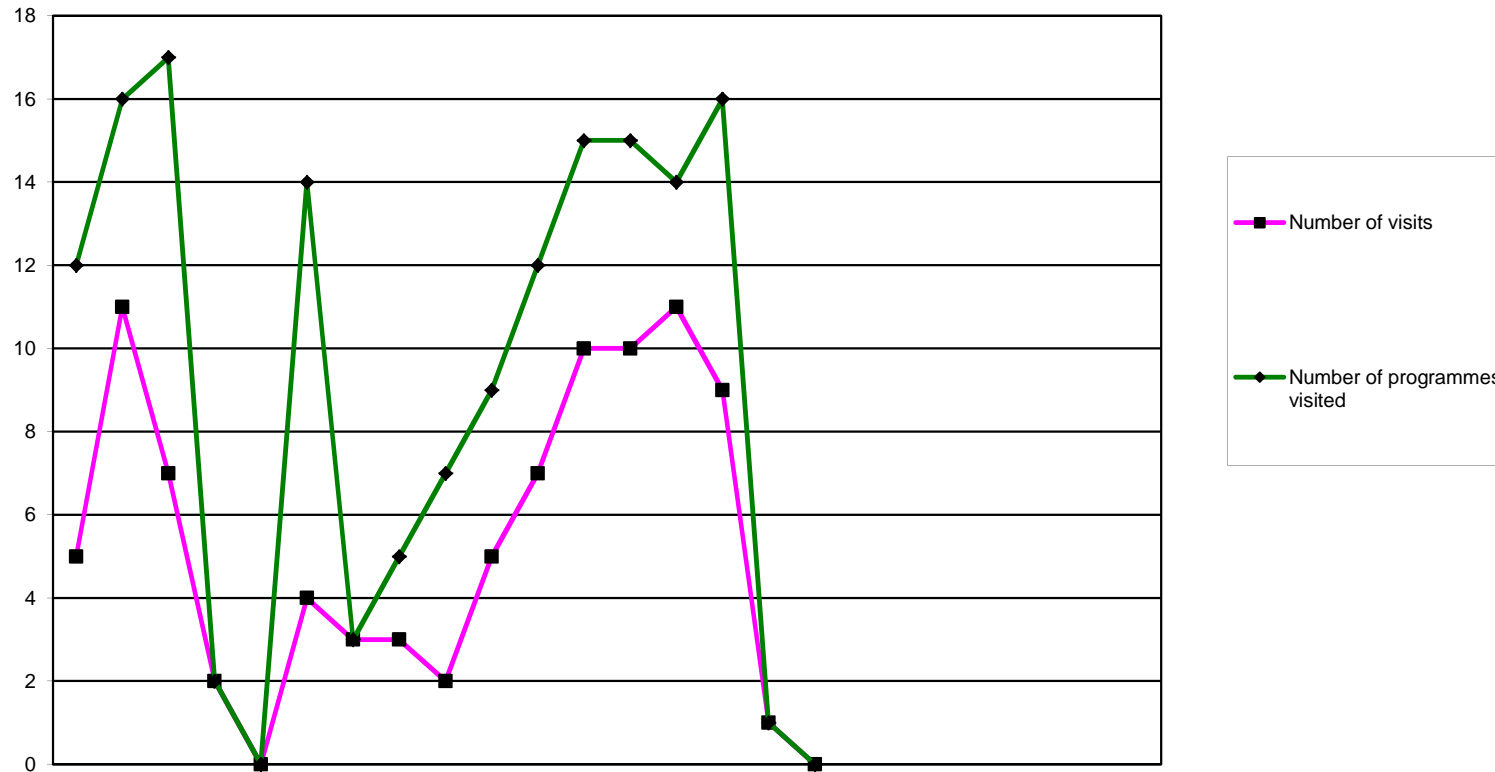
The Department has recruited three replacement Education Officers following Ben Potter's promotion to Education Manager and Lewis Roberts' and David Christopher's resignation and departure in June and July 2012. Matthew Nelson, previously a Registration Advisor, joined the Department on 20 August and Abdur Razzaq joined the Department on 3 September. Niall Lennon also joined the Department permanently this month, having been recruited as a temporary Education Officer in May.

## **Appendices**

Appendix 1 - Education management information statistics

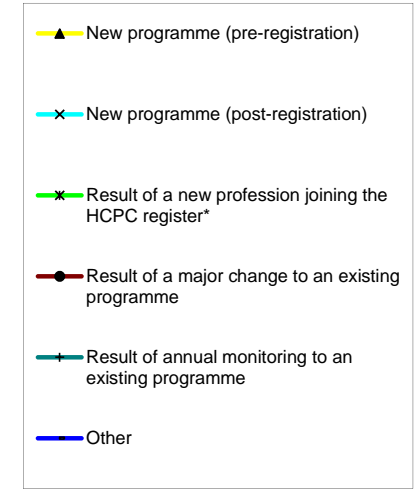
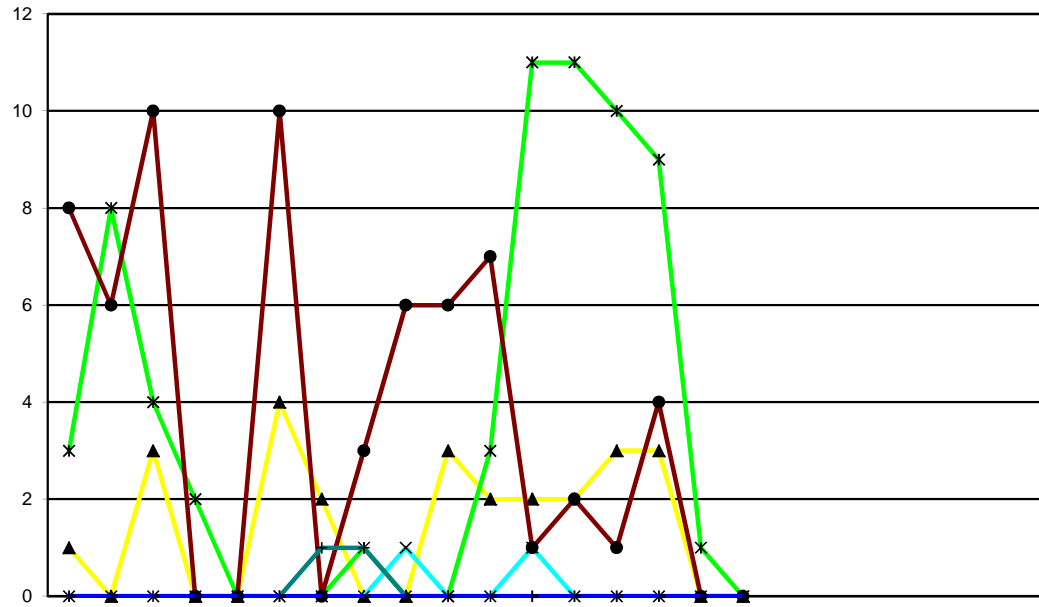


	2011			2012									2013						2011/12	2012/13								
	Apr	May	Jun	Jul	Aug	Sep	Oct	Nov	Dec	Jan	Feb	Mar	Apr	May	Jun	Jul	Aug	Sep	Oct	Nov	Dec	Jan	Feb	Mar	FYE	YTD		
Arts therapists	27	27	21	27	27	27	21	21	21	21	21	21	20	20	20	29									21	29		
Biomedical scientists	41	41	41	41	41	41	40	40	40	40	49	49	48	51	52	51										49	51	
Chiropodists/ Podiatrists	19	19	19	19	19	19	19	19	19	19	20	20	20	20	20	20										20	20	
Clinical scientists	1	1	1	1	1	1	1	1	1	1	1	1	1	1	1	1										1	1	
Dietitians	33	33	33	33	33	33	33	33	33	33	33	33	33	33	33	33										33	33	
Hearing aid dispensers	18	18	16	18	18	18	15	15	15	15	18	18	13	13	14	14										18	14	
Occupational therapists	73	74	73	74	74	74	73	73	74	74	74	74	74	74	74	74										74	74	
Operating Department Practitioners	32	32	32	32	32	32	34	34	34	34	34	34	32	31	33	33										34	33	
Orthoptists	2	2	2	2	2	2	2	2	2	2	3	3	3	3	3	3										3	3	
Paramedics	51	50	50	50	50	50	50	50	50	50	50	50	50	48	49	47										50	47	
Physiotherapists	68	69	68	69	69	69	67	67	68	67	67	67	65	65	65	65										67	65	
Practitioner psychologists	83	83	88	83	83	83	93	93	95	95	95	95	95	94	94	94										95	94	
Prosthetists/Orthotists	3	3	3	3	3	3	3	3	3	3	3	3	3	3	3	3										3	3	
Radiographers	52	55	52	55	55	55	51	51	55	55	56	56	55	54	54	54										56	54	
Social workers in England																												
Speech and language therapists	32	32	32	32	32	32	32	32	32	32	32	32	32	31	31	31										32	31	
Local anaesthesia	2	2	2	2	2	2	2	2	2	2	2	2	2	2	4	4										2	4	
Prescription only medicine	8	8	9	8	8	8	9	9	9	9	9	9	9	9	9	9										9	9	
Supplementary prescribing	78	76	77	76	76	76	77	77	77	77	77	77	77	77	77	77										77	77	
Approved mental health professionals																												
<b>Total approved programmes</b>	<b>623</b>	<b>625</b>	<b>619</b>	<b>625</b>	<b>625</b>	<b>625</b>	<b>622</b>	<b>622</b>	<b>630</b>	<b>629</b>	<b>644</b>	<b>644</b>	<b>632</b>	<b>629</b>	<b>636</b>	<b>642</b>										<b>644</b>	<b>642</b>	
<b>Total approved education providers</b>	<b>125</b>	<b>125</b>	<b>124</b>	<b>125</b>	<b>125</b>	<b>125</b>	<b>127</b>	<b>128</b>	<b>128</b>	<b>128</b>	<b>128</b>	<b>128</b>	<b>128</b>	<b>127</b>	<b>128</b>	<b>129</b>										<b>128</b>	<b>129</b>	



	2011			2012									2013												
	Apr	May	Jun	Jul	Aug	Sep	Oct	Nov	Dec	Jan	Feb	Mar	Apr	May	Jun	Jul	Aug	Sep	Oct	Nov	Dec	Jan	Feb	Mar	
<b>Overview of approval visits</b>																									
<b>Number of visits</b>	5	11	7	2	0	4	3	3	2	5	7	10	10	11	9	1	0								
<b>Number of programmes visited</b>	12	16	17	2	0	14	3	5	7	9	12	15	15	14	16	1	0								

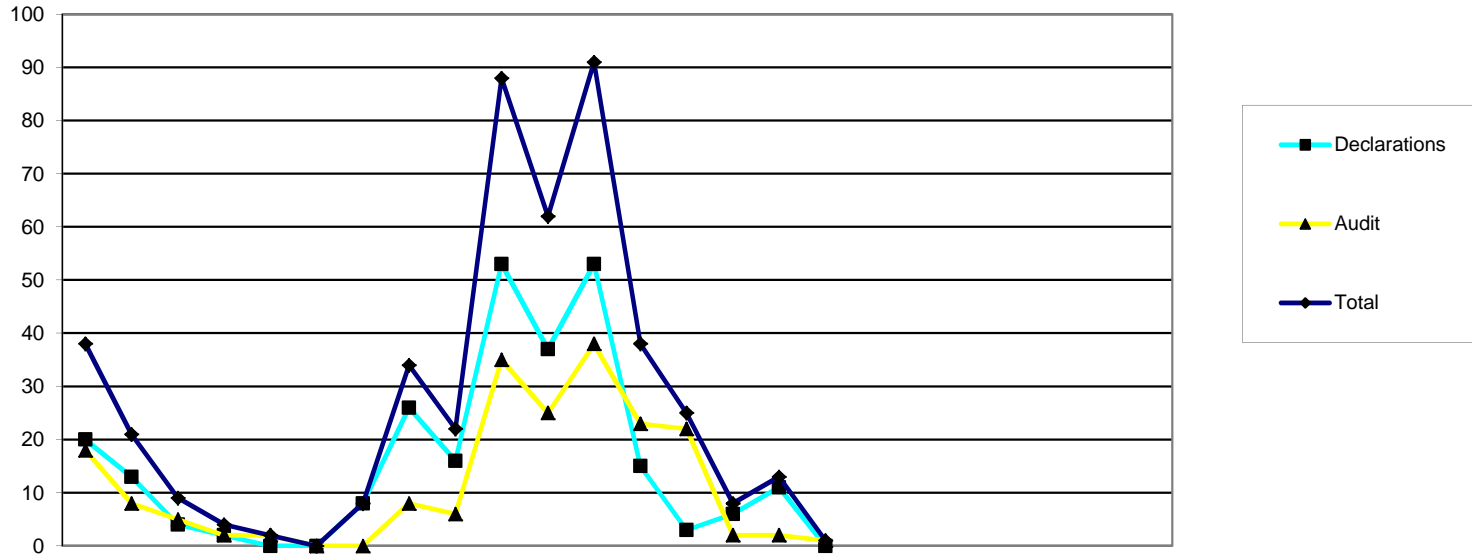
2005/6	2006/7	2007/8	2008/9	2009/10	2010/11	2011/12	2012/13
FYE	FYE	FYE	FYE	FYE	FYE	FYE	YTD
0	101	63	42	38	58	59	31
27	117	68	84	80	101	112	46



Reason for programme visited	2011			2012												2013												
	Apr	May	Jun	Apr	May	Jun	Jul	Aug	Sep	Oct	Nov	Dec	Jan	Feb	Mar	Apr	May	Jun	Jul	Aug	Sep	Oct	Nov	Dec	Jan	Feb	Mar	
New programme (pre-registration)	1	0	3	0	0	0	4	2	0	0	0	3	2	2	2	3	3	0	0									
New programme (post-registration)	0	0	0	0	0	0	0	0	0	1	0	0	1	1	0	0	0	0	0									
Result of a new profession joining the HCPC register*	3	8	4	2	0	0	0	0	1	0	0	3	11	11	10	9	1	0										
Result of a major change to an existing programme	8	6	10	0	0	10	0	3	6	6	7	1	2	1	4	0	0											
Result of annual monitoring to an existing programme	0	0	0	0	0	0	1	1	0	0	0	0	0	0	0	0	0	0										
Other	0	0	0	0	0	0	0	0	0	0	0	0	0	0	0	0	0	0										
<b>Total</b>	<b>12</b>	<b>14</b>	<b>17</b>	<b>2</b>	<b>0</b>	<b>14</b>	<b>3</b>	<b>5</b>	<b>7</b>	<b>9</b>	<b>12</b>	<b>15</b>	<b>15</b>	<b>14</b>	<b>16</b>	<b>1</b>	<b>0</b>											

2005/6	2006/7	2007/8	2008/9	2009/10	2010/11	2011/12	2012/13
FYE	FYE	FYE	FYE	FYE	FYE	FYE	YTD
0	18	32	21	25	29	17	8
7	29	1	7	1	0	2	0
5	16	4	0	7	31	32	31
5	32	26	53	42	37	57	7
5	1	3	3	3	4	2	0
5	21	2	0	2	0	0	0
<b>27</b>	<b>117</b>	<b>68</b>	<b>84</b>	<b>80</b>	<b>101</b>	<b>110</b>	<b>46</b>

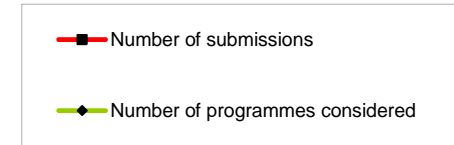
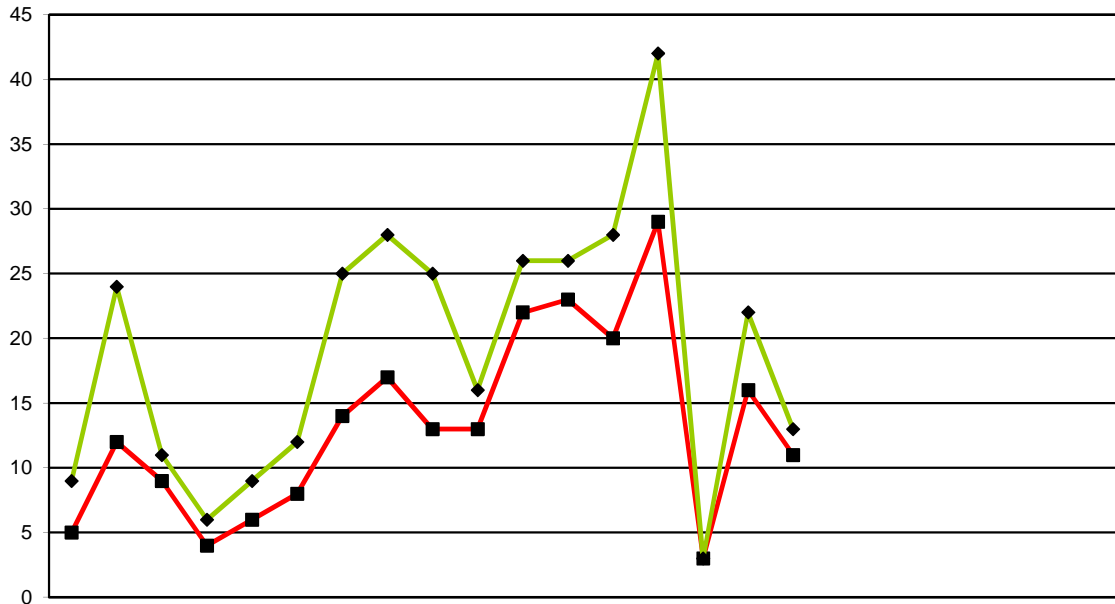
\* - Practitioner psychologists July 2009 - July 2012  
 - Hearing Aid Dispensers April 2010 - July 2012  
 - Social workers in England August 2012 - July 2015



	2011			2012											2013									
	Apr	May	Jun	Jul	Aug	Sep	Oct	Nov	Dec	Jan	Feb	Mar	Apr	May	Jun	Jul	Aug	Sep	Oct	Nov	Dec	Jan	Feb	Mar
<b>Annual monitoring submissions</b>																								
<b>Declarations</b>	20	13	4	2	0	0	8	26	16	53	37	53	15	3	6	11	0							
<b>Audit</b>	18	8	5	2	2	0	0	8	6	35	25	38	23	22	2	2	1							
<b>Total</b>	38	21	9	4	2	0	8	34	22	88	62	91	38	25	8	13	1							

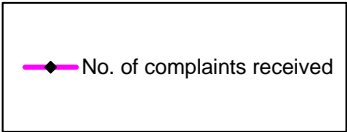
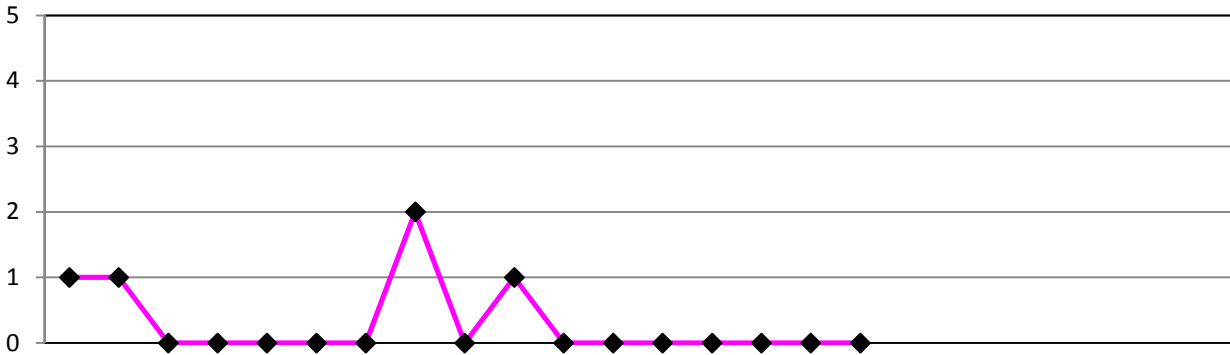
2005/6	2006/7	2007/8	2008/9	2009/10	2010/11	2011/12	2012/13
FYE	FYE	FYE	FYE	FYE	FYE	FYE	YTD
113	94	143	167	105	232	232	35
51	184	135	136	123	257	147	50
164	278	278	303	228	489	379	85





	2011			2012						2013														
	Apr	May	Jun	Jul	Aug	Sep	Oct	Nov	Dec	Jan	Feb	Mar	Apr	May	Jun	Jul	Aug	Sep	Oct	Nov	Dec	Jan	Feb	Mar
<b>Major change submissions</b>																								
<b>Number of submissions</b>	5	12	9	4	6	8	14	17	13	13	22	23	20	29	3	16	11							
<b>Number of programmes considered</b>	9	24	11	6	9	12	25	28	25	16	26	26	28	42	3	22	13							

2005/6	2006/7	2007/8	2008/9	2009/10	2010/11	2011/12	2012/13
FYE	FYE	FYE	FYE	FYE	FYE	FYE	YTD
16	51	62	66	115	104	146	79
25	97	109	141	179	169	217	108



		2011			2012						2013														
		Apr	May	Jun	Jul	Aug	Sep	Oct	Nov	Dec	Jan	Feb	Mar	Apr	May	Jun	Jul	Aug	Sep	Oct	Nov	Dec	Jan	Feb	Mar
<b>No. of complaints received</b>		1	1	0	0	0	0	0	2	0	1	0	0	0	0	0	0	0	0	0	0	0	0	0	
<b>Complaints outcomes</b>	<b>Directed visit</b>	0	0	0	0	0	0	0	0	0	0	0	0	0	0	0	0	0	0	0	0	0	0	0	
	<b>Approval process</b>	0	0	0	0	0	0	0	1	0	0	0	0	0	0	0	0	0	0	0	0	0	0	0	
	<b>Major change process</b>	0	1	0	0	0	0	0	0	0	0	0	0	0	0	0	0	0	0	0	0	0	0	0	
	<b>Annual monitoring process</b>	0	0	0	0	0	0	0	0	0	0	0	0	0	0	0	0	0	0	0	0	0	0	0	
	<b>Withdrawn</b>	0	0	0	0	0	0	0	0	0	0	0	0	0	0	0	0	0	0	0	0	0	0	0	
	<b>Unsubstantiated</b>	1	0	0	0	0	0	0	1	0	1	0	0	0	0	0	0	0	0	0	0	0	0	0	
	<b>Pending</b>	0	0	0	0	0	0	0	0	0	0	0	0	0	0	0	0	0	0	0	0	0	0	0	

	2009/10 FYE	2010/11 FYE	2011/12 FYE	2012/13 FYE
<b>No. of complaints received</b>	6	5	5	0
<b>No. of approved progs</b>	480	623	644	632
<b>% progs affected by complaints</b>	1.3%	0.8%	0.8%	0.0%