

## Human Resources, Partners – Kathryn Neuschafer

### **Recruitment**

There was an excellent response to the Radiographer Continuing Professional Development (CPD) Assessors vacancies. Fifty-five applications were received to fill the nine vacancies which were advertised in HPC In Focus and the Society of Radiographers publication, Synergy News. Offers have been accepted by all successful candidates.

There was a good response to the second round of advertising for Hearing Aid Dispenser roles. Seventeen applications were received to fill the five vacant posts. Vacancies for the Partner roles for Hearing Aid Dispensers were advertised in HPC In Focus, the British Society of Hearing Aid Audiologists (BSHAA) News and on the Hearing Aid Council website.

Ninety-two applications were received for Physiotherapist CPD Assessors to fill the twelve new vacancies. The posts were advertised in HPC In Focus and Frontline. Shortlisting is in progress.

Advertising has closed to fill the few vacancies identified since Practitioner Psychologists came on board. Applications have been received across each of the roles and modalities advertised. Shortlisting is in progress.

### **Partner Resignations**

There were eight partner resignations during September and October. The main reason for resignation was retirement.

### **Training**

There were two visitor refresher training sessions held in October. Thirty visitors were trained over the two sessions.

### **Partner Systems Upgrade**

There has been an upgrade of the partner database to enable multiple professional modalities to be recorded and reported on. The partner modalities for Psychologists and Clinical Scientists have now been recorded.

Health Professions Council

Partner Breakdown Report April 2008 - March 2010

Human Resources Department

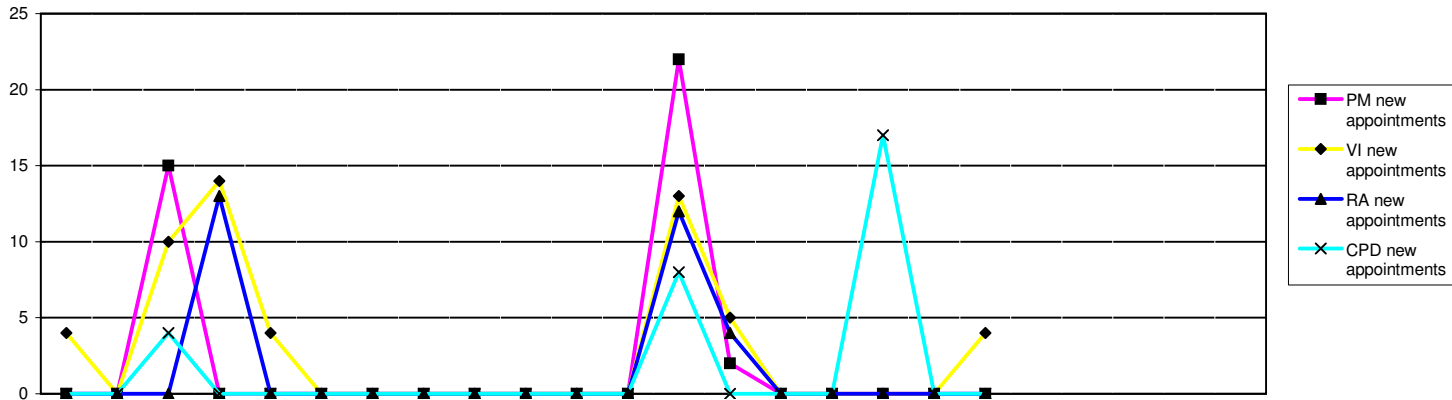
NB the volumes for panel members, visitors, registration assessors and CPD assessors include some partners performing several roles

Panel members and visitors

Panel Members	2008			2009									2010									2008/9	09/10			
	Apr	May	Jun	Jul	Aug	Sep	Oct	Nov	Dec	Jan	Feb	Mar	Apr	May	Jun	Jul	Aug	Sep	Oct	Nov	Dec	Jan	Feb	Mar	FYE	YTD
Arts therapists	5	5	5	5	5	5	2	2	2	0	0	0	0	0	0	9	9	9	9						0	9
Biomedical scientists	18	18	18	18	18	18	18	18	18	18	18	18	18	18	18	14	14	14	14						18	14
Chirops & podiatrists	9	9	9	9	9	9	9	9	9	9	8	8	8	8	8	8	8	8	8						8	8
Clinical scientists	30	30	30	30	30	30	30	30	30	29	29	29	29	29	29	27	27	26	26						29	26
Dietitians	6	6	6	6	6	6	6	6	6	6	6	6	6	6	6	6	6	6	6						6	6
Occupational therapists	8	8	8	11	11	11	11	11	11	11	11	11	11	11	11	10	10	10	10						11	10
ODPs	10	10	10	12	12	12	12	12	12	12	12	12	12	12	12	11	10	10	10						12	10
Orthoptists	6	6	6	6	6	6	5	5	5	5	5	5	5	5	5	6	6	6	6						5	6
Paramedics	14	14	14	14	14	14	14	14	14	14	14	14	14	14	14	14	16	16	16						14	16
Physiotherapists	32	32	32	32	32	32	31	31	31	29	28	28	28	28	28	29	29	27	27						28	27
Practitioner psychologists													23	23	23	24	25	25	25							25
Prosthetists & orthotists	3	3	3	5	5	5	4	4	4	3	2	2	2	2	2	6	6	6	6						2	6
Radiographers	19	19	19	20	20	20	20	20	20	20	20	20	20	20	20	18	18	18	17						20	17
SLTs	12	12	12	12	12	12	12	12	12	12	12	12	12	12	12	12	11	11	11						12	11
Lay members	39	39	39	39	39	39	39	39	39	39	39	39	39	39	39	31	30	30	30						39	30
<b>Total</b>	<b>211</b>	<b>211</b>	<b>211</b>	<b>219</b>	<b>219</b>	<b>219</b>	<b>213</b>	<b>213</b>	<b>213</b>	<b>207</b>	<b>204</b>	<b>204</b>	<b>227</b>	<b>227</b>	<b>227</b>	<b>225</b>	<b>225</b>	<b>222</b>	<b>221</b>						<b>204</b>	<b>221</b>
<b>Visitors</b>																									<b>FYE</b>	<b>YTD</b>
Arts therapists	15	15	15	15	15	15	15	15	15	15	15	15	15	15	15	15	14	14	14						15	14
Biomedical scientists	11	11	11	11	11	11	12	12	12	12	12	12	12	12	12	12	12	12	12						12	12
Chirops & podiatrists	11	11	11	11	11	11	11	11	11	11	11	11	11	11	11	10	9	9	9						11	9
Clinical scientists	6	6	6	6	6	6	5	5	5	5	5	5	5	5	5	9	9	9	9						5	9
Dietitians	6	6	6	6	6	6	5	5	5	5	5	5	5	5	5	8	8	8	8						5	8
Occupational therapists	10	10	10	10	10	10	14	14	14	14	14	14	14	14	14	15	15	15	15						14	15
ODPs	10	10	10	10	10	10	10	10	10	10	10	10	10	10	10	10	11	11	11						10	11
Orthoptists	5	5	5	5	5	5	6	6	6	6	6	6	6	6	6	5	5	5	5						6	5
Paramedics	14	14	14	14	14	14	17	17	17	17	17	17	17	17	17	16	16	16	16						17	16
Physiotherapists	17	17	17	17	17	17	16	16	16	16	16	16	16	16	16	14	13	13	13						16	13
Practitioner psychologists													19	19	19	15	24	22	26							26
Prosthetists & orthotists	4	4	4	4	4	4	4	4	4	4	4	4	4	4	4	4	4	4	4						4	4
Radiographers	17	17	17	17	17	17	17	17	17	17	17	17	17	17	17	16	16	16	16						17	16
SLTs	10	10	10	10	10	10	11	11	11	11	11	11	11	11	11	10	10	10	10						11	10
Lay members	4	4	4	4	4	4	4	4	4	4	4	4	4	4	4	4	4	4	4						4	4
<b>Total</b>	<b>140</b>	<b>140</b>	<b>140</b>	<b>140</b>	<b>140</b>	<b>140</b>	<b>147</b>	<b>147</b>	<b>147</b>	<b>147</b>	<b>147</b>	<b>147</b>	<b>166</b>	<b>166</b>	<b>166</b>	<b>163</b>	<b>170</b>	<b>168</b>	<b>172</b>						<b>147</b>	<b>172</b>

Page 20 contd - Registration assessors and CPD assessors

Registration Assessors	2008			2009									2010									2008/9	09/10															
	Apr	May	Jun	Jul	Aug	Sep	Oct	Nov	Dec	Jan	Feb	Mar	Apr	May	Jun	Jul	Aug	Sep	Oct	Nov	Dec	Jan	Feb	Mar	YTD	YTD												
Arts therapists	8	8	8	8	8	8	6	6	6	6	6	6	6	6	6	6	6	6							6	6												
Biomedical scientists	19	19	19	19	19	19	18	18	18	18	18	18	18	18	18	17	17	16	16							18	16											
Chirops & podiatrists	15	15	15	15	15	15	17	17	17	17	17	17	17	17	17	6	5	5	5							17	5											
Clinical scientists	43	43	43	43	43	43	25	25	25	25	25	25	25	25	23	24	23	23								25	23											
Dietitians	11	11	11	11	11	11	9	9	9	9	9	9	9	9	9	8	8	8								9	8											
Occupational therapists	13	13	13	13	13	13	12	12	12	12	12	12	12	12	11	11	11	11								12	11											
ODPs	5	5	5	5	5	5	4	4	4	4	4	4	4	4	4	4	4	4								4	4											
Orthoptists	6	6	6	6	6	6	6	6	6	6	6	6	6	6	6	6	6	6								6	6											
Paramedics	15	15	15	15	15	15	15	15	15	15	15	15	15	15	13	13	13	13								15	13											
Physiotherapists	25	25	25	25	25	25	25	25	25	25	25	25	25	25	22	22	22	22								25	22											
Practitioner psychologists																18	18	18	25	25	25	25					25											
Prosthetists & orthotists	3	3	3	3	3	3	3	3	3	3	3	3	3	3	3	3	3	3								3	3											
Radiographers	20	20	20	20	20	20	17	17	17	17	17	17	17	17	17	17	17	17								17	17											
SLTs	14	14	14	14	14	14	12	12	12	12	12	12	12	12	12	12	12	12								12	12											
<b>Total</b>	<b>197</b>	<b>197</b>	<b>197</b>	<b>197</b>	<b>197</b>	<b>197</b>	<b>169</b>	<b>169</b>	<b>169</b>	<b>169</b>	<b>169</b>	<b>169</b>	<b>169</b>	<b>187</b>	<b>187</b>	<b>187</b>	<b>174</b>	<b>173</b>	<b>171</b>	<b>171</b>						<b>169</b>	<b>171</b>											
<b>CPD Assessors</b>																										<b>FYE</b>	<b>YTD</b>											
Arts therapists	Not previously required												0	0	0	0	0	0	0																0			
Biomedical scientists	Not previously required												0	0	0	1	8	8	8																			8
Chirops & Podiatrists	0	14	14	14	14	14	13	13	13	13	13	13	13	13	13	13	13	13								13	13											
Clinical scientists	Not previously required												0	0	0	0	2	2	2																	2		
Dietitians	Not previously required												0	0	0	0	0	0	0																		0	
Occupational therapists	Not previously required												0	0	0	5	10	10	10																			10
ODPs	0	0	7	7	7	7	10	10	10	10	10	10	10	10	10	10	10	10								10	10											
Orthoptists	Not previously required												1	1	1	2	2	2	2																	2		
Paramedics	Not previously required												6	6	6	6	6	6	6																		6	
Physiotherapists	Not previously required												0	0	0	0	0	0	0																			0
Practitioner psychologists	Not previously required												0	0	0	0	0	0	0																			0
Prosthetists & orthotists	Not previously required												0	0	0	0	2	2	2																			2
Radiographers	Not previously required												0	0	0	0	0	0	0																			0
SLTs	Not previously required												0	0	0	0	3	3	3																			3
<b>Total</b>		14	21	21	21	21	23	23	23	23	23	23	30	30	30	37	56	56	56							23	56											
<b>Legal Assessors</b>	Not previously reported															12	12	11	11																	11		
<b>Panel Chair</b>	Not previously reported															19	19	19	20																			20



	2008			2009												2010			2008/9 FYE	09/10 YTD							
	Apr	May	Jun	Jul	Aug	Sep	Oct	Nov	Dec	Jan	Feb	Mar	Apr	May	Jun	Jul	Aug	Sep			Oct	Nov	Dec	Jan	Feb	Mar	
<b>Panel members</b>																											
PM new appointments	0	0	15	0	0	0	0	0	0	0	0	0	0	22	2	0	0	0	0	0	0	0	0	0	0	15	24
Resignations/Terminations																					3	1	4				
Total NumberTrained	211	211	211	219	219	219	219	219	219	219	219	219	219	242	242	242	225	224	221	220	219	224					
Awaiting training	16	16	31	21	21	21	21	21	21	21	21	21	21	20	22	22	1	1	1	1	21	1					
<b>Visitors</b>																											
VI new appointments	4	0	10	14	4	0	0	0	0	0	0	0	0	13	5	0	0	0	0	4	32	22					
Resignations/Terminations																					2	0	2				
Total NumberTrained	123	123	123	123	138	138	138	138	138	138	138	138	157	157	157	163	160	158	158	138	158						
Awaiting training	9	9	19	37	26	26	26	26	26	26	26	26	20	25	25	10	10	10	14	26	14						
<b>Registration assessors</b>																											
RA new appointments	0	0	0	13	0	0	0	0	0	0	0	0	0	12	4	0	0	0	0	13	16						
Resignations/Terminations																					2	0	2				
Total NumberTrained	193	193	193	193	193	193	193	193	193	193	193	193	211	211	211	174	173	171	171	193	173						
Awaiting training	1	1	1	14	14	14	14	14	14	14	14	14	7	11	11	0	1	1	1	14	0						
<b>CPD assessors</b>																											
CPD new appointments	0	0	4	0	0	0	0	0	0	0	0	0	0	8	0	0	0	17	0	0	4	25					
Resignations/Terminations																					0	0	0				
Total NumberTrained	0	0	21	21	21	21	25	25	25	25	25	25	31	37	37	37	37	37	52	52	25	52					
Awaiting training	22	22	5	5	5	5	1	1	1	1	1	1	2	2	2	2	4	4	4	1	4						
<b>Legal Assessors</b>																											
LA new appointments	Not previously reported																				0	0	0	0	0		
Resignations/Terminations																							1	1	1		
Total NumberTrained																					12	12	11	11	11		
Awaiting training																					0	0	0	0	0		
<b>Panel Chairs</b>																											
Panel Chair new appointments	Not previously reported																				0	0	0	0	0		
Resignations/Terminations																							0	0	0		
Total NumberTrained																					19	19	19	20	20		
Awaiting training																					0	0	0	0	0		