

Fitness to Practise – Kelly Johnson

Final Hearings

119 cases were concluded between April and September 2009. We anticipate concluding approximately 150 further cases by the end of March 2010.

Review Hearings

42 reviews of orders have taken place between April and September 2009. In 15 cases the registrant was struck off the register. In 9 other cases the original order was revoked.

Interim Orders

64 applications or review of interim orders took place between April and September 2009. The majority of those cases are presented by HPC Case Managers acting in their capacity of presenting officers.

Investigating Committee

372 new allegations or enquiries were received between April and September 2009. This also includes 44 cases which were transferred to the HPC by the BPS and AEP in July 2009. At the end of September 2009 there were 361 open cases. This includes 90 cases that have not yet met the standard of acceptance for allegations. The case to answer referral rate currently stands at 58%

Health and Character

Between April and September 2009, 383 declarations were received. At the end of September there were 115 open declarations. It is usual for a high number of declarations to be received over the summer months as new graduates apply for registration and a number of professions are renewing their registration.

Protection of title

161 complaints about misuse of title were received between April and September 2009. We currently have 49 open complaints which is the lowest it has ever been.

Registration Appeals

12 registration appeals were received between April and September 2009. There are currently 11 open registration appeals.

High Court Appeals

There are currently 5 registrants who are appealing the decisions of Conduct and Competence Committee panels. One case has been listed for 23 October 2009 and another for 8 and 9 December 2009. We are awaiting dates in three other cases.

We are also applying to the High Court to for an extension to an interim order which due to circumstances beyond our control has not been concluded at final hearing.

In two other cases, we have agreed with the registrant for the case to be remitted back to the Conduct and Competence Committee for reconsideration.

Once all the cases referred to above have concluded, we will provide a report to the Committee and the Council on the outcome and any relevant learning points.

CHRE

We are seeking the recovery of costs in relation to an appeal withdrawn by the CHRE

Court of Appeal

The appeal in the matter of Stanley Muscat was considered by the Court of Appeal on 29 July 2009. Judgement was reserved and we are awaiting the decision.

Meetings

1 April 2009 Panel Chair Interviews
9 April 2009 Bernard Horsford re OHPA
15 April 2009 CHRE re health reference
28 April 2009 BSI Audit
30 April 2009 CHRE Fitness to Practise Forum
11 May 2009 Reading University statistics department
13 May 2009 National Offender Management Service
14 May 2009 CHRE Sexual boundaries seminar
14 May 2009 National Clinical Assessment Service Forum
18 May 2009 Public Guardian Board

19 May 2009 ISA/PVG Cross Border Session
20 May 2009 ISA/PVG Regulators meeting
21 May 2009 Gary Lewin, The Football Association
22 May 2009 Notifiable Occupations Scheme Networking Day, Home Office
28 May 2009 Jon Dee, PKF
28 May 2009 NHS Counter Fraud and Security Management Service.
10 June 2009 Protecting Vulnerable Groups Conference, Glasgow
16 June 2009 Kingsley Napley six weekly meeting
18 June 2009 London Olympic Games Organising Committee
22 June 2009 National Offender Management Service
24 June 2009 GB Training
29 June 2009 Esther McMorris, 9 Feet Tall
8 July 2009 CHRE Learning points meetings
9 July 2009 NISCC visit
13 July 2009 BACP
13 July 2009 College of Physiotherapists, Ontario
14 July 2009 College of Paramedics
15 July 2009 Reading University
31 July 2009 Ian Todd, Nursing and Midwifery Council
3 August 2009 IPSOS MORI
5 August 2009 Department of Health
6 August 2009 UKCP
1 September 2009 Kingsley Napley
14 September 2009 NISCC
16/17 September 2009 Case Management vendor demonstrations
23 September 2009 Listening Event, Darlington
24 September 2009 Fitness to Practise department away day

30 September 2009 Ros Hayles, General Optical Council

Resources

In June 2009, Anaru Smiler was appointed to the position of Lead Hearings Officer. His role includes providing managerial support to the Head of Adjudication and ensuring that the logistical requirements of the increasing number of hearings are managed. Also in June 2009, Jameel Anwar was promoted to the newly created position of Administrative Co-ordinator. His role is to ensure that the high administrative demands of a department of this nature are appropriately co-ordinated. Gary Rope joined the department from the Registrations department as a replacement for Jameel.

Following the departures of three case managers and the creation of new case management roles within the department, Cara Donald, Paddideh Dolatashi, Joanna Power, Alan Shilabeer, Delwyn King and Nafeesah Aumerally have joined the Case Teams.

The department is now at full budgeted headcount for 2009-10. We are currently reviewing our resource requirements for the remainder of the year. Interviews for a new Hearings Officer will take place on 9 October 2009. We also have two temporary employees working within the department. One is a scheduling officer to aid in ensuring hearings are scheduled; the other is an invoice administrator to aid us in managing the high number of invoices that are received by the department.

Other

Further information on the work of the department can be found in the work plan update.

Date	Ver.	Dept/Cmte	Doc Type	Title	Status
2007-06-01	b	INF	CER	template individual CEO reports	Final DD: None

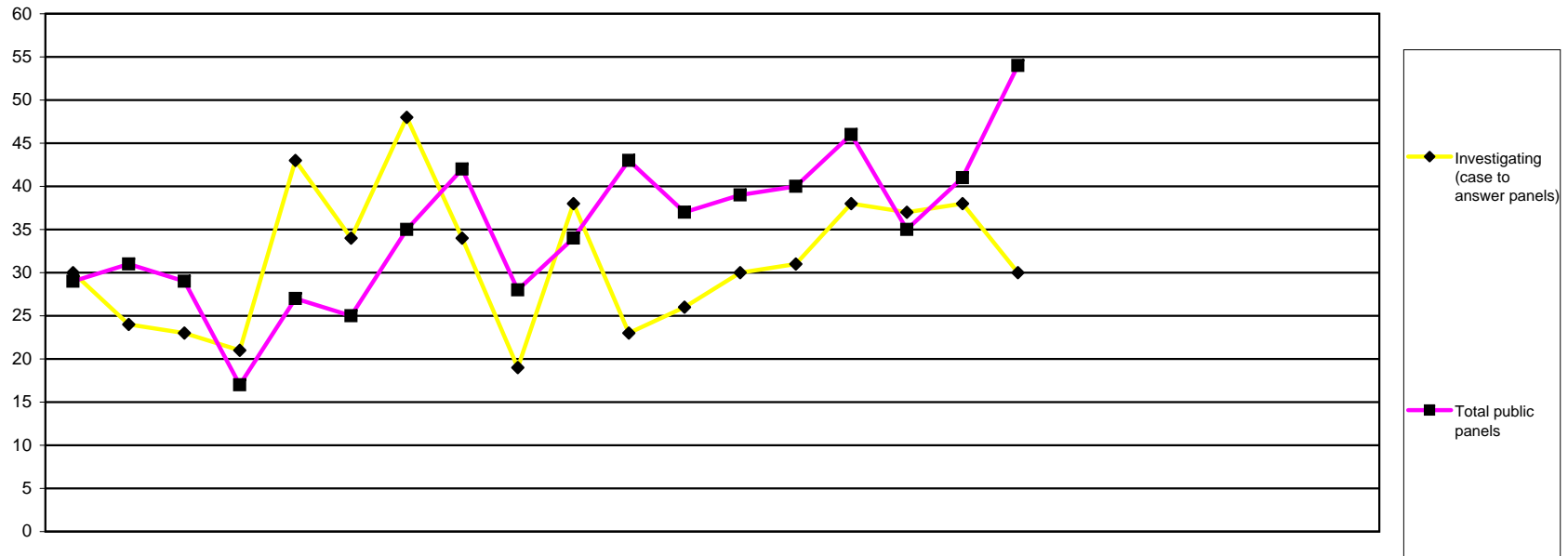
Int. Aud.
Internal RD: None

Management Information Pack

Fitness to Practise Department Figures for April to
September 2009

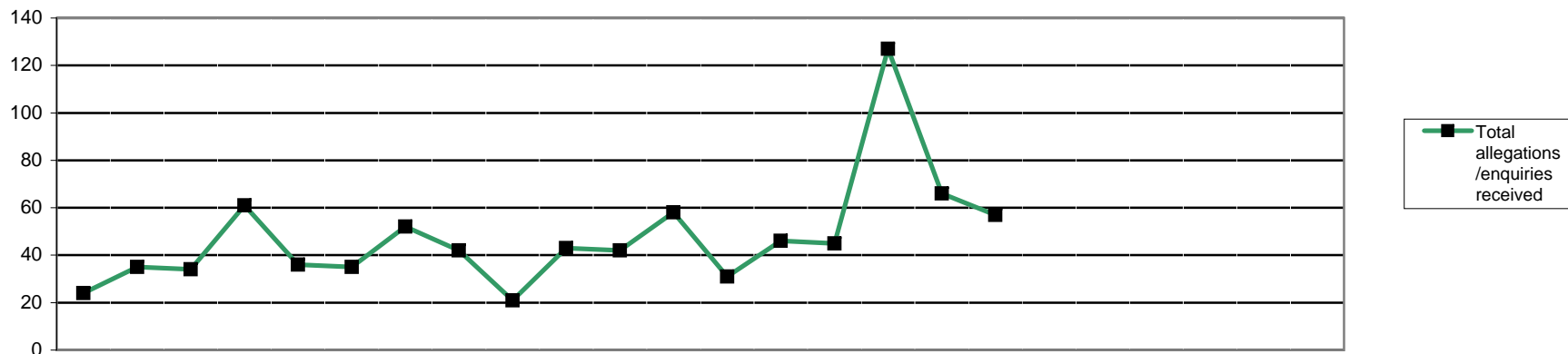
**Management Reporting Information
Fitness to Practise Department Figures for April to September 2009**

Fitness to Practise	Total Cases Considered	2
	Enquiries and allegations: source	3
	Enquiries and Allegations: Profession & source of complaint	4
	Total Investigating Panel decisions and referrals	5
	Investigating Panel Decisions by profession and source of allegation	6
	Length of time: Allegations	7
	Length of time: Cases Investigating Committee 2003-4 to 2009-10	8
	Allegations made: conclusion of final hearing 2003-4 to 2009-10	9
	Allegations made: Investigating Panel 2003-4 to 2009-10	10
	Interim Orders by profession	11
	Panel Hearings, Decisions	12
	Final hearings (CCC and HC) representation	13
	Hearings: decisions by profession	14
	Cases Pending: Investigating Committee	15
	Cases Pending: Conduct and Competence, Health & Review Hearing	16
Registration Appeals	Registration Appeals	17
Protection of Title	Protection of Title	18
Health and Character	Health and Character Declarations	19



		2008			2009								2010						2007/8	2008/9	09/10							
		Apr	May	Jun	Jul	Aug	Sep	Oct	Nov	Dec	Jan	Feb	Mar	Apr	May	Jun	Jul	Aug	Sep	Oct	Nov	Dec	Jan	Feb	Mar	FYE	FYE	YTD
Public Panels	Investigating (case to answer panels)	30	24	23	21	43	34	48	34	19	38	23	26	30	31	38	37	38	30	297	363	204						
	Investigating (incorrect entry)	1	0	0	0	0	0	0	0	0	0	0	0	1	1	0	0	0	0	19	1	2						
	Conduct & Competence	17	15	13	8	11	14	17	16	24	25	20	23	20	20	27	24	24	33	176	203	148						
	Health	0	0	0	0	0	1	0	0	0	0	2	0	1	0	0	0	0	0	9	3	1						
	Review cases	7	9	11	7	7	6	12	11	0	7	6	10	3	9	8	2	9	9	67	93	40						
	Interim order (application)	1	2	2	1	5	1	3	4	3	1	4	3	9	2	3	2	3	5	20	30	24						
	Interim order (review)	3	5	3	1	11	3	3	11	1	1	11	1	5	8	8	7	5	7	52	54	40						
	Total public panels	29	31	29	17	27	25	35	42	28	34	43	37	39	40	46	35	41	54	343	384	255						
Total panels	59	55	52	38	77	59	83	76	47	72	66	63	69	71	84	72	79	84	640	747	459							

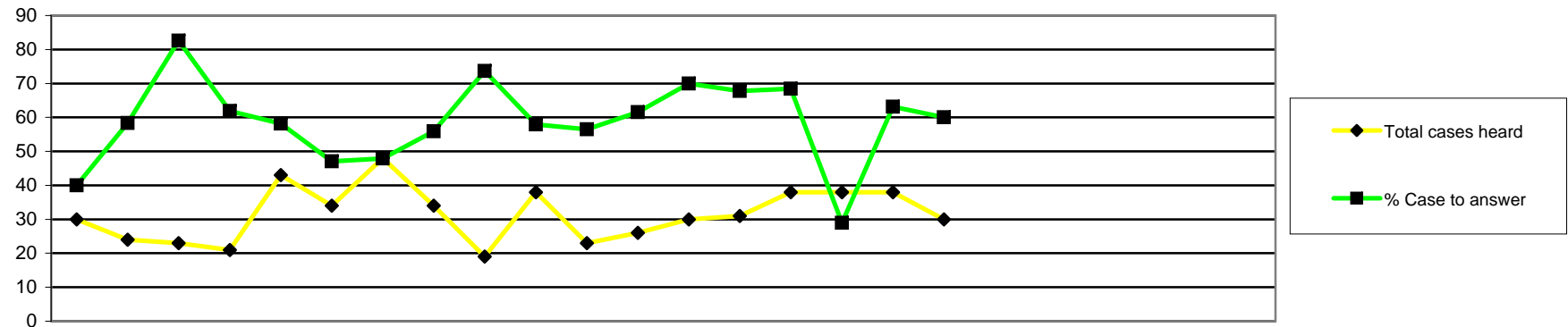
This table displays how many cases were considered by each type of panel



		2008			2009									2010						2005/6	2006/7	2007/8	2008/9	09/10						
		Apr	May	Jun	Jul	Aug	Sep	Oct	Nov	Dec	Jan	Feb	Mar	Apr	May	Jun	Jul	Aug	Sep	Oct	Nov	Dec	Jan	Feb	Mar	FYE	FYE	FYE	FYE	YTD
Source of enquiry	Total enquiries	6	13	7	12	7	16	11	9	9	14	18	20	5	19	17	45	19	22	Not recorded					109	142	127			
	Employer	3	3	1	3	2	4	3	6	3	3	9	10	3	9	8	10	8	10	44	50	48								
	Public	3	8	3	5	1	7	1	2	3	3	4	2	0	8	4	30	6	10	32	42	58								
	Police	0	0	0	2	1	0	0	0	0	0	0	1	0	0	2	0	0	0	3	4	2								
	Professional body	0	1	1	0	0	0	0	0	0	0	0	0	0	0	0	0	0	0	1	2	0								
	Registrant	0	0	1	1	2	1	4	1	2	0	0	7	1	1	1	2	1	1	13	19	7								
	Other	0	0	1	0	1	1	1	0	1	4	1	0	0	0	0	2	2	1	2	10	5								
	Article 22(6)/Anon	0	1	0	1	0	3	2	0	0	4	4	0	1	1	2	1	2	0	14	15	7								
Source of allegation	Total allegations	18	22	27	49	29	19	41	33	12	29	24	38	26	27	28	82	47	35	316	322	315	341	245						
	Employer	8	15	18	17	12	8	18	14	4	12	12	11	12	21	12	26	13	10	113	164	127	149	94						
	Public	4	2	3	5	10	2	7	11	0	7	5	11	3	1	7	33	16	8	61	77	76	67	68						
	Police	3	3	2	6	1	5	3	3	2	0	3	1	3	2	2	4	4	4	27	31	32	32	19						
	Professional body	0	0	0	0	0	1	0	0	0	0	0	0	0	0	0	0	0	1	0	1	6	1	1						
	Registrant	1	2	2	3	3	1	2	1	2	6	2	5	4	1	1	3	3	4	30	16	22	30	16						
	Other	1	0	2	2	3	1	2	1	0	1	0	1	1	0	1	6	1	2	13	7	3	14	11						
	Article 22(6)/Anon	1	0	0	16	0	1	9	3	4	3	2	9	3	2	5	10	10	6	57	23	49	48	36						
Allegation type	Misconduct	12	17	21	34	16	11	25	20	4	25	16	22	14	16	13	53	32	23	205	228	177	223	151						
	Lack of competence	2	2	2	8	10	1	4	6	2	0	4	9	6	4	10	15	8	7	33	44	29	50	50						
	Conviction/caution	4	3	3	4	1	7	10	7	3	0	4	5	5	6	4	12	4	5	41	41	49	51	36						
	Health	0	0	1	0	1	0	1	0	1	3	0	0	1	0	0	1	1	0	2	1	1	7	3						
	Other regulator	0	0	0	0	0	0	0	0	1	0	0	0	0	0	0	0	0	0	1	0	2	1	0						
	Incorrect or fraudulent entry	0	0	0	0	1	0	1	0	1	1	0	2	0	1	1	1	2	0	33	3	4	6	5						
	Not classified	0	0	0	3	0	0	0	0	0	0	0	0	0	0	0	0	0	0	24	3	4	3	0						
	Total allegations/enquiries received	24	35	34	61	36	35	52	42	21	43	42	58	31	46	45	127	66	57	314	318	424	483	372						

	Employer	Public	Police	Professional Body	Registrant	Other	Article 22(6)/Anon	
Arts therapists	0	2	0	0	0	1	1	
Biomedical scientists	11	0	1	0	0	0	1	
Chiropodists & podiatrists	10	16	3	0	4	1	1	
Clinical scientists	0	0	0	0	0	0	0	
Dietitians	4	0	0	0	0	0	2	
Occupational therapists	24	9	0	0	5	2	4	
ODPs	6	1	2	0	0	0	6	
Orthoptists	0	0	0	0	0	0	0	
Paramedics	37	13	3	0	5	2	17	
Physiotherapists	23	19	7	0	5	1	2	
Practitioner psychologists	9	57	1	0	3	8	3	
Prosthetists & orthotists	1	2	0	0	0	0	0	
Radiographers	12	2	4	1	0	1	3	
SLTs	5	5	0	0	1	0	3	
Total	142	126	21	1	23	16	43	

Total 2007/8	Total 2008/9	Total to date
16	10	4
26	43	13
40	62	35
6	8	0
14	1	6
45	55	44
38	55	15
3	0	0
94	100	77
85	95	57
N/A	N/A	81
3	6	3
32	34	23
22	14	14
424	483	372



		2008			2009									2010									2006/7	2007/8	2008/9	09/10			
		Apr	May	Jun	Jul	Aug	Sep	Oct	Nov	Dec	Jan	Feb	Mar	Apr	May	Jun	Jul	Aug	Sep	Oct	Nov	Dec	Jan	Feb	Mar	FYE	FYE	FYE	YTD
Case to Answer	Total cases heard	30	24	23	21	43	34	48	34	19	38	23	26	30	31	38	38	38	30	178	299	363	205						
	Referred to CCC (Reg representations)	5	8	13	11	16	12	13	12	5	11	10	10	13	13	20	7	14	12	Not recorded	97	126	79						
	Referred to CCC (Rep representations)	2	2	0	1	1	1	2	3	1	0	0	1	0	1	1	2	2	1		25	14	7						
	Referred to CCC (No representations)	4	4	5	1	8	3	6	4	8	9	3	5	6	5	4	2	7	5		57	60	29						
	Referred to HC (Reg representations)	1	0	1	0	0	0	2	0	0	1	0	0	1	1	0	0	1	0		3	5	3						
	Referred to HC (Rep representations)	0	0	0	0	0	0	0	0	0	0	0	0	0	0	0	0	0	0		2	0	0						
	Referred to HC (No representations)	0	0	0	0	0	0	0	0	0	0	0	0	0	0	1	0	0	0		1	0	1						
	Referred to IC (Reg representations)	0	0	0	0	0	0	0	0	0	0	0	0	1	0	0	0	0	0		1	0	1						
	Referred to IC (Rep representations)	0	0	0	0	0	0	0	0	0	0	0	0	0	0	0	0	0	0		0	0	0						
	Referred to IC (No representations)	0	0	0	0	0	0	0	0	0	1	0	0	0	0	0	0	0	0		0	1	0						
	Total case to answer	12	14	19	13	25	16	23	19	14	22	13	16	21	21	26	11	24	18		82	186	206	121					
	% Case to answer	40	58.3	82.6	61.9	58.1	47.1	47.9	55.9	73.7	57.9	56.5	61.5	70	67.7	68.4	28.9	63.2	60		62	57	59						
No case to answer	Not referred (Reg representations)	11	7	4	7	12	15	14	12	4	14	9	6	9	8	10	24	11	9	Not recorded	78	115	71						
	Not referred (Rep representations)	3	1	0	0	3	1	1	1	0	0	0	3	0	0	1	2	1	1		8	13	5						
	Not referred (No representations)	2	2	0	1	3	0	8	2	1	2	0	0	0	1	1	0	1	1		21	21	4						
	Total cases not referred	16	10	4	8	18	16	23	15	5	16	9	9	9	9	12	26	13	11		107	149	80						
	Further Information	2	0	0	0	0	2	2	0	0	0	1	1	0	1	0	1	1	1	14	6	8	4						

By profession

	No Case to Answer	Case to answer				Total YTD
		FI	CCC	HC	IC	
Arts therapists	0	0	1	0	0	1
Biomedical scientists	1	1	7	0	1	10
Chiropodists & podiatrists	19	0	7	1	0	27
Clinical scientists	0	0	1	0	0	1
Dietitians	2	0	1	0	0	3
Occupational therapists	10	0	13	1	0	24
ODPs	7	2	22	1	0	32
Orthoptists	0	0	0	0	0	0
Paramedics	11	0	33	1	0	45
Physiotherapists	23	1	15	0	0	39
Practitioner psychologists	1	0	0	0	0	1
Prosthetists & orthotists	0	0	0	0	0	0
Radiographers	4	0	15	0	0	19
SLTs	2	0	1	0	0	3
Total YTD	80	4	116	4	1	205

2007/2008 FYE	2008/2009 FYE	2009/10 YTD
11	6	1
14	42	10
31	31	27
6	7	1
9	5	3
29	40	24
24	30	32
2	1	0
62	72	45
56	75	39
0	0	1
4	2	0
41	32	19
10	20	3
299	363	205

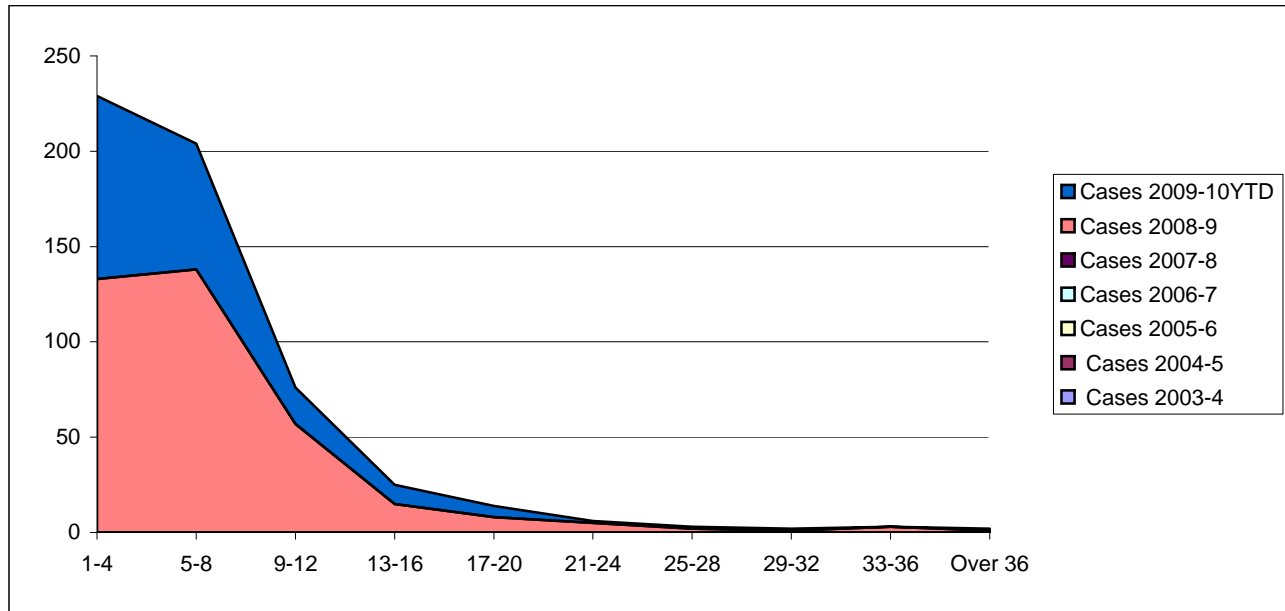
By source of allegation

	No Case to Answer	Case to answer				Total YTD
		FI	CCC	HC	IC	
Employer	19	3	63	4	0	89
Public	37	0	8	0	1	46
Police	5	0	6	0	0	11
Professional body	1	0	1	0	0	2
Registrant	9	1	9	0	0	19
Other	2	0	4	0	0	6
Article 22(6)/Anon	7	0	25	0	0	32
Total YTD	162	8	233	8	2	205

2008/2009 FYE	2009/10 YTD
176	89
78	46
30	11
2	2
12	19
19	6
46	32

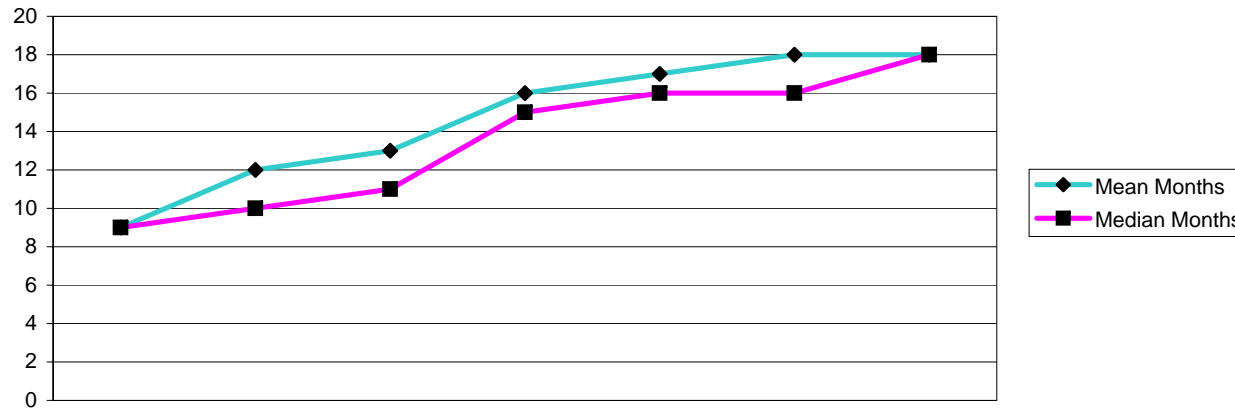
		Month of Panel																							
		2008						2009						2009											
Months		Apr	May	Jun	Jul	Aug	Sep	Oct	Nov	Dec	Jan	Feb	Mar	Apr	May	Jun	Jul	Aug	Sep	Oct	Nov	Dec	Jan	Feb	Mar
Cases awaiting ICP	0-4	69	55	65	94	94	58	80	80	55	53	58	78	122	139	137	171	193	197						
	5-8	30	62	58	57	51	68	51	55	62	58	53	49	50	42	42	43	37	41						
	9-12	39	19	28	37	45	40	27	24	33	34	32	35	14	16	17	23	21	18						
	13-16	21	28	22	20	15	21	28	25	16	12	16	19	10	7	9	8	7	9						
	17-20	11	10	12	12	14	11	9	8	19	18	10	12	2	3	1	2	3	4						
	21-24	5	8	6	5	2	5	5	8	3	5	8	10	1	1	0	0	0	0						
	25-28	1	2	6	7	5	0	1	1	4	3	2	2	2	1	1	0	0	0						
	29-32	4	3	2	1	2	5	2	2	0	1	2	3	1	1	1	2	1	1						
	over 33	13	11	11	12	9	10	10	8	9	8	8	8	2	1	1	0	1	1						
Cases awaiting final hearing (from ICP)	1-4	56	51	45	46	59	48	62	56	54	54	46	48	80	85	95	91	99	91						
	5-8	17	29	43	44	26	22	31	37	36	38	42	32	54	53	61	47	44	49						
	9-12	29	22	19	22	47	20	22	29	28	30	29	31	18	22	25	29	41	26						
	13-16	35	36	45	33	26	4	40	36	23	32	28	29	21	21	17	14	8	12						
	17-20	16	12	9	21	30	14	13	13	21	23	22	8	14	17	12	10	5	6						
	21-24	10	15	9	11	8	8	18	17	11	5	3	18	0	0	4	5	9	9						
	25-28	2	5	5	5	5	0	6	11	14	17	9	8	2	0	1	1	1	1						
	29-32	4	3	2	2	5	0	1	2	2	3	4	7	0	1	1	1	1	0						
	over 33	6	6	5	1	7	1	3	5	4	5	2	1	0	0	0	0	0	1						

NB for 2008-9 the figures were recorded in weeks, from April 2009 they are recorded in months

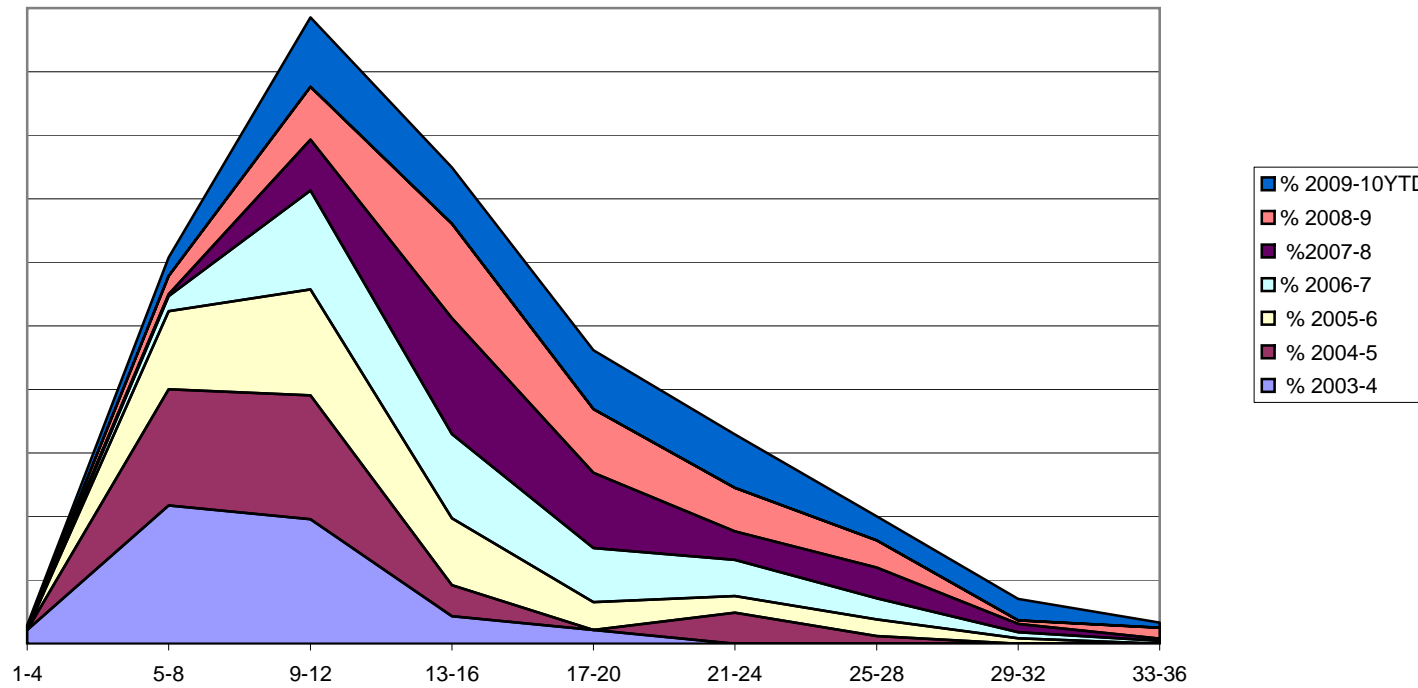


Number of Months	Cases 2003-4	Cases 2004-5	Cases 2005-6	Cases 2006-7	Cases 2007-8	Cases 2008-9	Cases 2009-10YTD
1-4						133	96
5-8						138	66
9-12						57	19
13-16						15	10
17-20						8	6
21-24						5	1
25-28						2	1
29-32						1	1
33-36						3	0
Over 36			Not available			1	1
Mean Months						7	6
Median Months						5	5
Total Cases						363	201

epartment

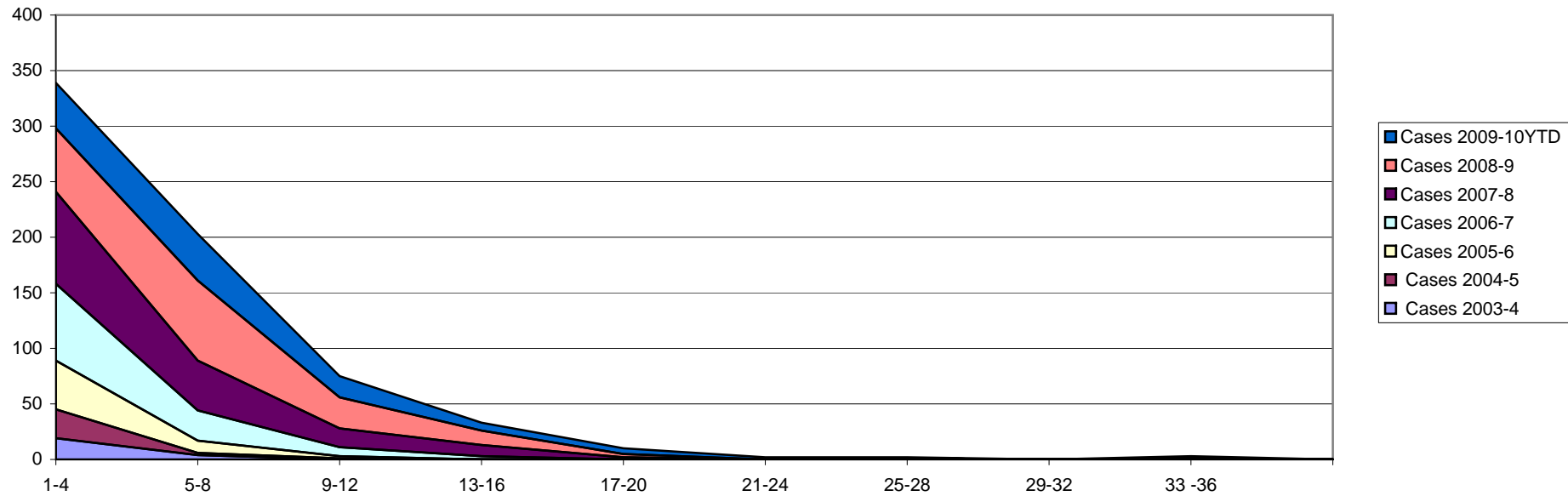


Number of Months	Cases 2003-4	Cases 2004-5	Cases 2005-6	Cases 2006-7	Cases 2007-8	Cases 2008-9	Cases 2009-10YTD
1-4	1	0	0	0	1	0	1
5-8	10	15	14	5	1	10	7
9-12	9	16	19	33	25	29	26
13-16	2	4	12	28	57	52	21
17-20	1	0	5	18	37	35	22
21-24	0	4	3	12	14	24	20
25-28	0	1	3	7	15	15	9
29-32	0	0	1	2	4	2	8
33-36	0	0	0	1	1	6	2
Over 36	0	0	0	0	0	2	3
Mean Months	9	12	13	16	17	18	18
Median Months	9	10	11	15	16	16	18
Total Cases	23	41	57	106	156	175	119



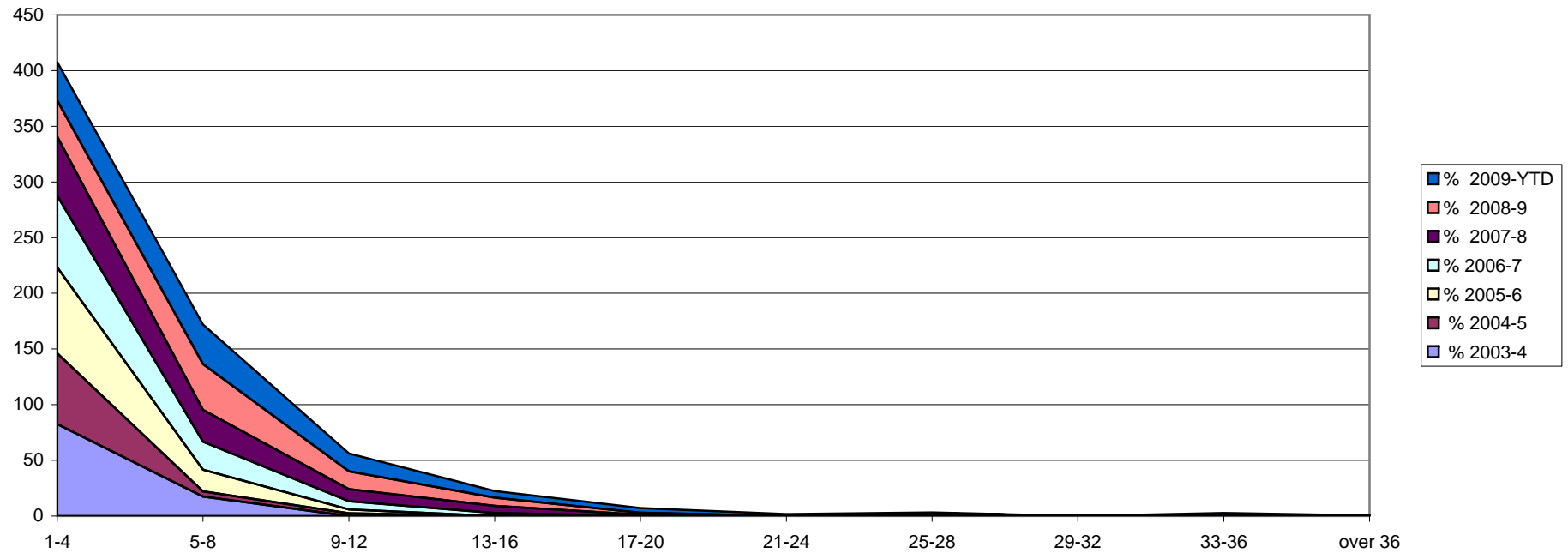
Number of Months	% 2003-4	% 2004-5	% 2005-6	% 2006-7	% 2007-8	% 2008-9	% 2009-10YTD
1-4	4.3	0.0	0.0	0.0	0.6	0.0	0.8
5-8	43.5	36.6	24.6	4.7	0.6	5.7	5.9
9-12	39.1	39.0	33.3	31.1	16.0	16.6	21.8
13-16	8.7	9.8	21.1	26.4	36.5	29.7	17.6
17-20	4.3	0.0	8.8	17.0	23.7	20.0	18.5
21-24	0	9.8	5.3	11.3	9.0	13.7	16.8
25-28	0	2.4	5.3	6.6	9.6	8.6	7.6
29-32	0	0.0	1.8	1.9	2.6	1.1	6.7
33-36	0	0.0	0.0	0.9	0.6	3.4	1.7
Over 36	0	0.0	0.0	0.9	0.6	1.1	2.5

Health Professions Council Allegations made - Investigating Panel (concluded final hearing cases) 2003-4 to 2009- Fitness to Practise Department

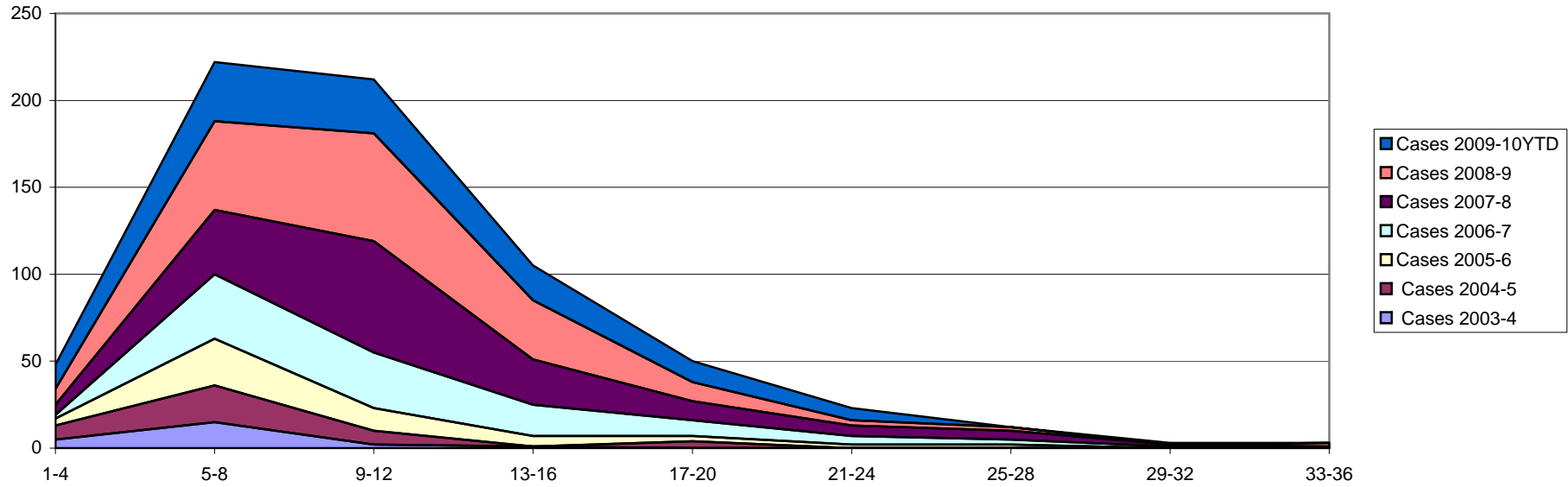


Number of Months	Cases 2003-4	Cases 2004-5	Cases 2005-6	Cases 2006-7	Cases 2007-8	Cases 2008-9	Cases 2009-10YTD
1-4	19	26	44	69	83	57	41
5-8	4	2	11	27	45	72	42
9-12	0	1	2	8	17	28	19
13-16	0	0	0	3	10	13	7
17-20	0	0	0	0	2	3	5
21-24	0	0	0	0	0	0	2
25-28	0	1	0	0	0	0	1
29-32	0	0	0	0	0	0	0
33 -36	0	0	0	0	0	1	2
over 36	0	0	0	0	0	0	0
Mean Months	3	4	3	4.5	6	7	8
Meadian Months	3	3	3	3	4	6	6
Total Cases	23	41	57	107	157	175	119

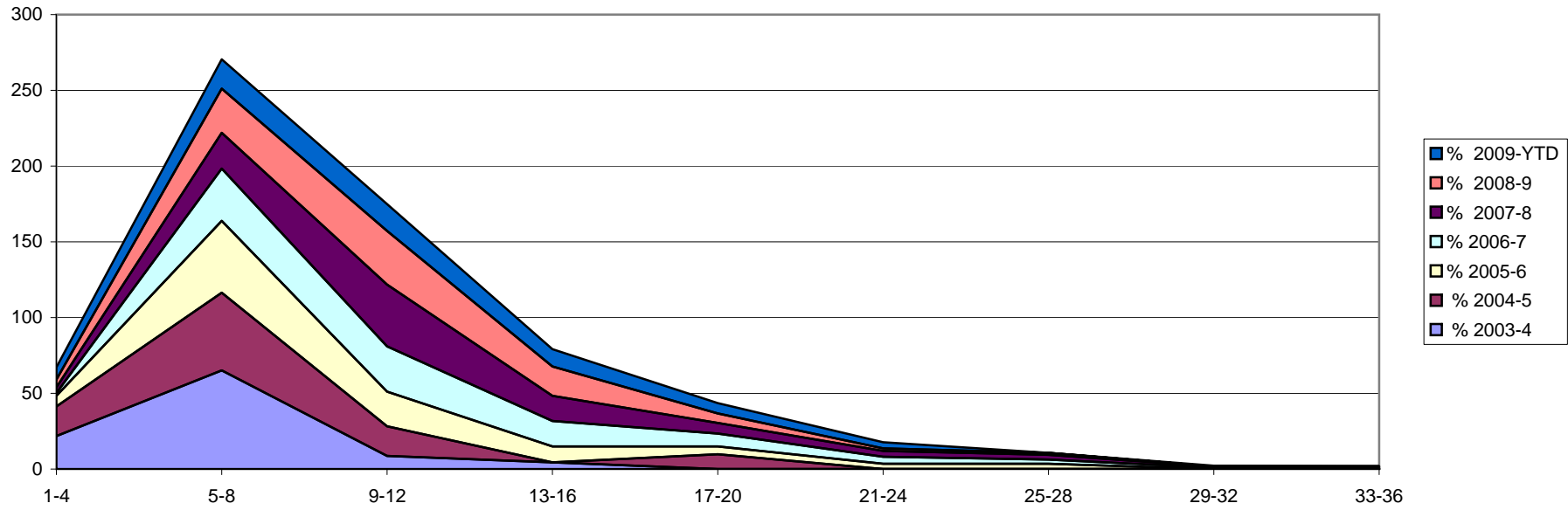
Allegations made - Investigating Panel percentages



Number of Months	% 2003-4	% 2004-5	% 2005-6	% 2006-7	% 2007-8	% 2008-9	% 2009-YTD
1-4	83	63	77	64	53	33	34
5-8	17	5	19	25	29	41	35
9-12	0	2	4	7	11	16	16
13-16	0	0	0	3	6	7	6
17-20	0	0	0	0	1	2	4
21-24	0	0	0	0	0	0	2
25-28	0	2	0	0	0	0	1
29-32	0	0	0	0	0	0	0
33-36	0	0	0	0	0	1	2
over 36	0	0	0	0	0	1	0

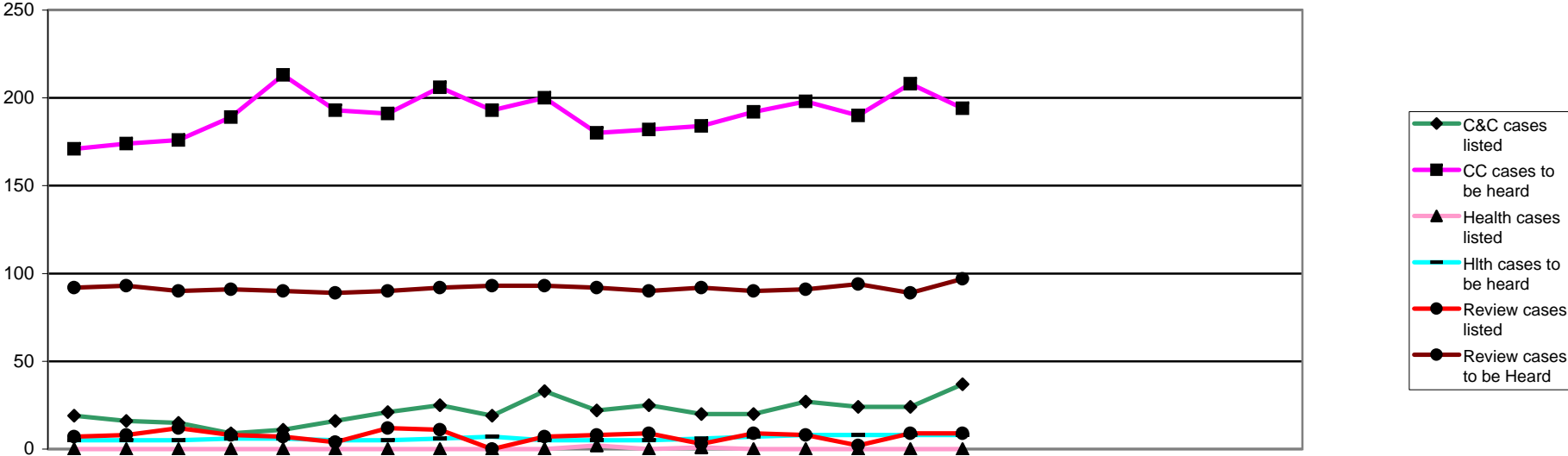


Number of Months	Cases 2003-4	Cases 2004-5	Cases 2005-6	Cases 2006-7	Cases 2007-8	Cases 2008-9	Cases 2009-10YTD
1-4	5	8	4	2	6	9	14
5-8	15	21	27	37	37	51	34
9-12	2	8	13	32	64	62	31
13-16	1	0	6	18	26	34	20
17-20	0	4	3	9	11	11	12
21-24	0	0	2	5	6	3	7
25-28	0	0	2	3	5	2	0
29-32	0	0	0	1	1	0	1
33-36	0	0	0	0	1	2	0
Over 36	0	0	0	0	0	1	0
Mean Months	6	8	10	11.5	12	11	11
Median Months	5	7	8	10	11	10	10
Total Cases	23	41	57	107	157	175	119



Number of Months	% 2003-4	% 2004-5	% 2005-6	% 2006-7	% 2007-8	% 2008-9	% 2009-YTD
1-4	22	20	7	2	4	5	8
5-8	65	51	47	35	24	29	19
9-12	9	20	23	30	41	35	18
13-16	4	0	11	17	17	19	11
17-20	0	10	5	8	7	6	7
21-24	0	0	4	5	4	2	4
25-28	0	0	4	3	3	1	0
29-32	0	0	0	1	1	0	1
33-36	0	0	0	0	1	1	0
Over 36	0	0	0	0	1	1	0

	Applications Considered	Applications Granted	Applications Not Granted	Reviewed	Revoked	Hearings held 2007/8 FYE	Hearings held 2008/9 FYE	Hearings held 2009/10 YTD
Arts therapists	1	1	0	0	0	4	4	1
Biomedical scientists	1	1	0	2	0	8	16	3
Chiropodists & podiatrists	3	3	0	2	0	6	5	5
Clinical scientists	0	0	0	0	0	4	0	0
Dietitians	0	0	0	0	0	0	0	0
Occupational therapists	1	1	0	5	0	3	6	6
ODPs	2	2	0	6	0	18	18	8
Orthoptists	0	0	0	0	0	0	0	0
Paramedics	7	7	0	12	1	16	14	19
Physiotherapists	3	3	0	7	1	8	13	10
Practitioner psychologists	0	0	0	0	0			0
Prosthetists & orthotists	0	0	0	0	0	0	0	0
Radiographers	4	4	0	2	0	7	6	6
SLTs	2	1	0	4	0	0	3	6
Total	24	23	0	40	2	74	85	64



Page 12 part 1 Panel Hearings Decisions: Conduct and Competence Cases

	2008			2009									2010					2005/6	2006/7	2007/8	2008/9	09/10										
	Apr	May	Jun	Jul	Aug	Sep	Oct	Nov	Dec	Jan	Feb	Mar	Apr	May	Jun	Jul	Aug	Sep	Oct	Nov	Dec	Jan	Feb	Mar	FYE	FYE	FYE	FYE	YTD			
Conduct & Competence Committee																																
C&C cases listed	19	16	15	9	11	16	21	25	19	33	22	25	20	20	27	24	24	37								73	119	176	231	152		
Struck off	4	1	5	4	4	3	5	9	5	11	7	6	0	4	9	2	10	10								11	26	37	64	35		
Suspended	1	3	1	1	3	2	2	1	2	2	1	4	4	2	1	3	1	6								19	19	30	23	17		
Conditions of practice	0	0	0	0	1	0	3	0	3	1	1	1	1	2	0	1	0	2								5	5	7	10	6		
Caution	4	1	2	0	2	2	1	2	4	2	1	3	6	2	3	7	4	0								8	32	28	24	22		
No further action	0	3	0	0	1	1	0	2	0	0	0	0	2	0	1	1	3	3								4	6	4	7	10		
Not well founded	4	5	3	1	0	6	3	3	2	2	4	3	3	4	3	4	0	5									0	19	36	19		
Adjourned/part heard	4	2	2	2	0	0	2	1	3	7	6	6	3	5	10	6	6	7								22	22	32	35	37		
Cancelled	2	1	0	1	0	1	5	1	0	7	1	2	0	0	0	0	0	4									0	24	21	4		
Referred to Health	0	0	0	0	0	0	0	0	0	0	0	0	0	0	0	0	0	0								1	0	1	0	0		
Removed - consent	Not available												1	0	0	0	0	0														1
CC cases to be heard	171	174	176	189	213	193	191	206	193	200	180	182	184	192	198	190	208	194								59	59	172	117	194		

		2008			2009									2010									2005/6	2006/7	2007/8	2008/9	09/10				
		Apr	May	Jun	Jul	Aug	Sep	Oct	Nov	Dec	Jan	Feb	Mar	Apr	May	Jun	Jul	Aug	Sep	Oct	Nov	Dec	Jan	Feb	Mar	FYE	FYE	FYE	FYE	YTD	
Health Committee	Health cases listed	0	0	0	0	0	0	0	0	0	0	2	0	1	0	0	0	0	0								8	7	9	2	1
	Suspended	0	0	0	0	0	0	0	0	0	0	1	0	1	0	0	0	0	0								2	2	5	1	1
	Conditions of practice	0	0	0	0	0	0	0	0	0	0	1	0	0	0	0	0	0	0								3	1	0	1	0
	Caution	0	0	0	0	0	0	0	0	0	0	0	0	0	0	0	0	0	0								0	0	0	0	0
	No further action	0	0	0	0	0	0	0	0	0	0	0	0	0	0	0	0	0	0								0	1	0	0	0
	Not well founded	0	0	0	0	0	1	0	0	0	0	0	0	0	0	0	0	0	0								Not recorded		1	1	0
	Adjourned/part heard	0	0	0	0	0	0	0	0	0	0	0	0	0	0	0	0	0	0								Not recorded		1	0	0
	Cancelled	0	0	0	0	0	0	0	0	0	0	0	0	0	0	0	0	0	0								Not recorded		2	0	0
	Referred to C&C	0	0	0	0	0	0	0	0	0	0	0	0	0	0	0	0	0	0								Not recorded		0	0	0
	Hlth cases to be heard	5	5	5	6	6	5	5	6	7	5	5	5	6	7	8	8	8	8								7	7	4	5	8
Investigating	Removed												1	1	0	0	0	0												2	
	Amended												0	0	0	0	0	0												0	
	Not well found												0	0	0	0	0	0												0	
	Adjourned/part heard												0	0	0	0	0	0												0	

	2008			2009									2010									2005/6	2006/7	2007/8	2008/9	09/10					
	Apr	May	Jun	Jul	Aug	Sep	Oct	Nov	Dec	Jan	Feb	Mar	Apr	May	Jun	Jul	Aug	Sep	Oct	Nov	Dec	Jan	Feb	Mar	FYE	FYE	FYE	FYE	YTD		
CCC and HC Review Hearings	Review cases listed	7	8	12	8	7	4	12	11	0	7	8	9	3	9	8	2	9	9									41	67	67	40
	Struck off	0	0	0	0	1	0	5	2	0	1	4	4	2	5	3	1	1	1										10	17	13
	Suspension continued	4	7	5	4	5	3	5	7	0	5	2	4	1	3	4	0	4	3										37	51	15
	Conditions continued	1	1	0	1	0	0	0	0	0	0	0	0	0	0	1	0	0	3										2	3	4
	Suspension revoked	0	0	0	0	0	1	0	2	0	1	0	1	0	0	0	0	3	0										2	5	3
	Suspension revoked conditions imposed	0	0	0	2	1	0	0	0	0	0	0	0	0	0	0	0	0	1										1	3	1
	Suspension revoked caution imposed	1	0	0	0	0	0	0	0	0	0	0	0	0	0	0	1	0	0										0	1	1
	Conditions revoked	0	0	0	0	0	0	1	0	0	0	1	0	0	1	0	0	1	1										5	2	3
	Conditions revoked suspension imposed	0	0	0	0	0	0	1	0	0	0	0	0	0	0	0	0	0	0										5	1	0
	Conditions revoked caution imposed	0	0	0	0	0	0	0	0	0	0	0	0	0	0	0	0	0	0										1	0	0
	Adjourned/part heard	1	0	0	1	0	0	0	0	0	0	1	0	0	0	0	0	0	0										3	3	0
	Cancelled													0	0	0	0	0	0												0
	Review cases to be Heard	92	93	90	91	90	89	90	92	93	93	92	90	92	90	91	94	89	97									69	90	90	94

Representation

	Final Hearings-CCC													2009/10 YTD	
	Struck off	Suspended	Conditions of Practice	Caution	No Further Action	Not Well Founded	NR	Referred to Health	Removed	Register entry amended	Restored	Not restored	Vol Removal (Consent)		Adjourned/Part Heard
Represented self	11	3	0	7	1	4	0	0	0	0	0	0	0	10	36
Representative	2	6	7	20	5	19	0	0	0	0	0	0	0	24	83
None	25	12	0	2	2	1	0	0	2	0	0	0	1	2	47
Total	38	21	7	29	8	24	0	0	2	0	0	0	1	36	166

The above table does not include cases that were postponed or cancelled

Profession	RS	Rep	None	% of rep
Arts therapists	2	4	1	86
Biomedical scientists	5	12	6	74
Chiropodists & podiatrists	1	5	1	86
Clinical scientists	1	1	2	50
Dietitians	0	2	0	0
Occupational therapists	5	13	8	69
ODPs	4	2	6	50
Orthoptists	0	1	0	0
Paramedics	7	16	16	59
Physiotherapists	4	14	7	72
Practitioner psychologists	0	0	0	0
Prosthetists & orthotists	0	0	0	0
Radiographers	6	7	5	72
SLTs	1	8	0	100

RS = Represented self

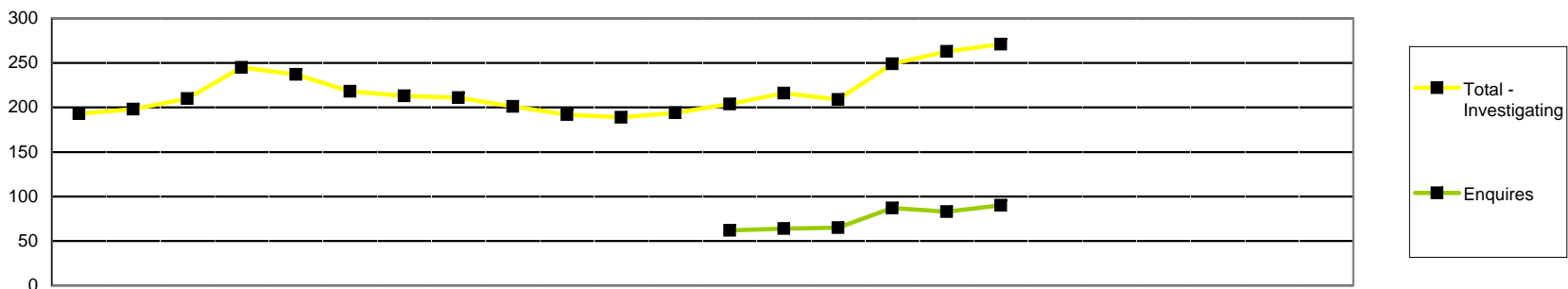
Rep = Represented

% of rep = percentage of representation

	Final Hearings												
	Struck off	Suspended	Conditions of Practice	Caution	No Further Action	Not Well Founded	NR	Referred to Health	Removed	Register entry amended	Restored	Not restored	Vol Removal (Consent)
Arts therapists	2	0	0	0	2	1	0	0	0	0	0	0	0
Biomedical scientists	2	3	3	2	1	1	0	0	1	0	0	0	0
Chiropodists & podiatrists	0	1	1	2	0	3	0	0	0	0	0	0	0
Clinical scientists	2	0	0	0	0	1	0	0	0	0	0	0	0
Dietitians	0	0	0	0	0	0	0	0	0	0	0	0	0
Occupational therapists	4	2	0	4	1	4	0	0	1	0	0	0	0
ODPs	6	3	0	1	3	5	0	0	0	0	0	0	0
Orthoptists	0	1	0	2	1	0	0	0	0	0	0	0	0
Paramedics	11	3	1	10	0	1	0	0	0	0	0	0	0
Physiotherapists	4	5	2	4	0	6	0	0	0	0	0	0	0
Practitioner psychologists	0	0	0	0	0	0	0	0	0	0	0	0	0
Prosthetists & orthotists	0	0	0	0	0	0	0	0	0	0	0	0	0
Radiographers	0	3	0	2	0	2	0	0	0	0	0	0	1
SLTs	0	0	0	1	0	2	0	0	0	0	0	0	0
Total 2009/10 YTD	31	21	7	28	8	26	0	0	2	0	0	0	1
Total 2008/2009 FYE	67	25	12	24	4	39	0	0			0	0	
Total 2007/2008 FYE	37	35	5	30	23	24	0	0			0	0	
Total 2006/2007 FYE	24	19	5	25	6	15	1	2			0	0	
Total 2005/2006 FYE	9	20	6	9	3	1	6	3			0	0	

The above table relates to registrants not cases.

	Review Hearings									
	Struck off	Suspension continued	Suspension revoked	Suspension revoked caution imposed	Suspension revoked conditions imposed	Conditions continued	Conditions revoked	Conditions revoked caution imposed	Conditions revoked suspension imposed	Adjourned/Part Heard
Arts therapists	0	0	0	0	0	0	0	0	0	0
Biomedical scientists	0	3	0	0	0	0	1	0	0	0
Chiropodists & podiatrists	1	1	0	0	0	0	0	2	0	0
Clinical scientists	0	0	0	0	0	0	0	0	0	0
Dietitians	0	1	0	0	0	0	0	0	0	0
Occupational therapists	1	4	1	0	0	0	0	0	0	0
ODPs	3	0	0	0	0	0	0	0	0	0
Orthoptists	0	1	1	0	0	0	0	0	0	0
Paramedics	3	0	1	0	0	0	0	0	0	0
Physiotherapists	6	3	0	0	1	1	1	0	0	0
Practitioner psychologists	0	0	0	0	0	3	1	0	0	0
Prosthetists & orthotists	0	1	0	0	0	0	0	0	0	0
Radiographers	0	1	0	0	0	0	0	0	0	0
SLTs	0	0	0	0	0	0	0	0	0	0
Total 2009/10 YTD	14	15	3	0	1	4	3	2	0	0
Total 2008/2009 YTD	16	51	8	2	3	3	1			3
Total 2007/2008 FYE	8	25	2	0	0	3	0			4
Total 2006/2007 FYE	Not available									
Total 2005/2006 FYE	Not available									



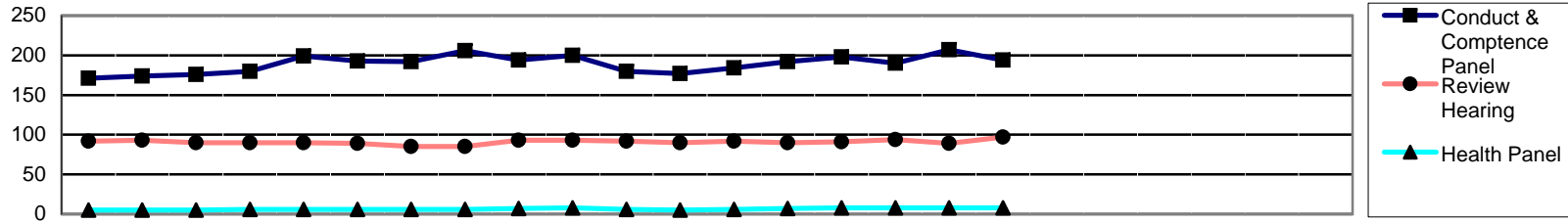
	2008			2009									2010									2005/6 FYE	2006/7 FYE	2007/8 FYE	2008/9 FYE	09/10 YTD										
	Apr	May	Jun	Jul	Aug	Sep	Oct	Nov	Dec	Jan	Feb	Mar	Apr	May	Jun	Jul	Aug	Sep	Oct	Nov	Dec						Jan	Feb	Mar							
Enquires																																				
Arts therapists													0	0	0	0	1	0														0				
Biomedical scientists													2	2	3	2	5	8														8				
Chiropodists & podiatrists													4	4	2	5	4	6														6				
Clinical scientists													1	1	1	1	1	0														0				
Dietitians													6	6	5	5	1	2														2				
Occupational therapists													10	15	15	10	11	8														8				
ODPs	Not available												12	8	8	8	7	8														8				
Orthoptists													0	0	0	0	0	0														0				
Paramedics													11	13	13	15	15	18														18				
Physiotherapists													12	11	12	9	7	11														11				
Practitioner psychologists*													N/A	N/A	0	26	24	20														20				
Prosthetists & orthotists													1	0	1	0	0	0														0				
Radiographers													2	3	3	3	2	4														4				
SLTs													1	1	2	3	5	5														5				
Total - Enquiries													62	64	65	87	83	90														90				
Investigating Panel																																				
Arts therapists	1	3	6	8	7	6	2	0	0	0	0	1	1	1	1	3	2	4										2	3	1	1	4				
Biomedical scientists	11	12	16	26	27	27	20	17	16	17	13	14	11	10	10	12	10	11										5	10	13	14	11				
Chiropodists & podiatrists	17	17	19	27	28	29	34	36	34	28	26	27	25	26	28	28	29	25										24	26	18	27	25				
Clinical scientists	2	3	2	3	4	5	4	4	4	4	4	4	4	4	3	3	3	4										3	4	3	4	4				
Dietitians	4	2	3	3	2	1	0	0	0	0	0	0	1	1	2	3	7	5										1	3	4	0	5				
Occupational therapists	28	23	25	23	26	21	27	30	29	26	27	29	33	33	29	34	33	40										14	19	22	29	40				
ODPs	16	18	20	23	25	22	24	24	23	24	22	26	27	29	20	16	14	13										14	15	18	26	13				
Orthoptists	1	1	1	1	0	0	0	0	0	0	0	0	0	0	0	0	0	0										0	1	1	0	0				
Paramedics	36	42	43	40	38	41	42	40	34	37	38	35	37	44	50	65	63	57										19	47	40	35	57				
Physiotherapists	40	44	43	52	50	40	37	35	37	33	33	39	46	47	45	43	46	49										50	55	43	39	49				
Practitioner psychologists*																			0	19	30	36														36
Prosthetists & orthotists	2	2	3	2	2	2	2	1	1	1	2	2	2	2	2	2	2	4										2	3	2	2	4				
Radiographers	19	16	15	22	17	15	13	17	16	17	18	12	13	14	13	15	16	13										18	32	17	12	13				
SLTs	16	15	14	15	11	9	8	7	7	5	6	5	4	5	6	6	8	10										6	10	16	5	10				
Total - Investigating	193	198	210	245	237	218	213	211	201	192	189	194	204	216	209	249	263	271										158	228	198	194	271				

* Practitioner psychologists section of register opened 1st July 2009

Health Professions Council

Cases Pending: Conduct and Competence, Health April 2008 - March 2010

Fitness to Practise Department

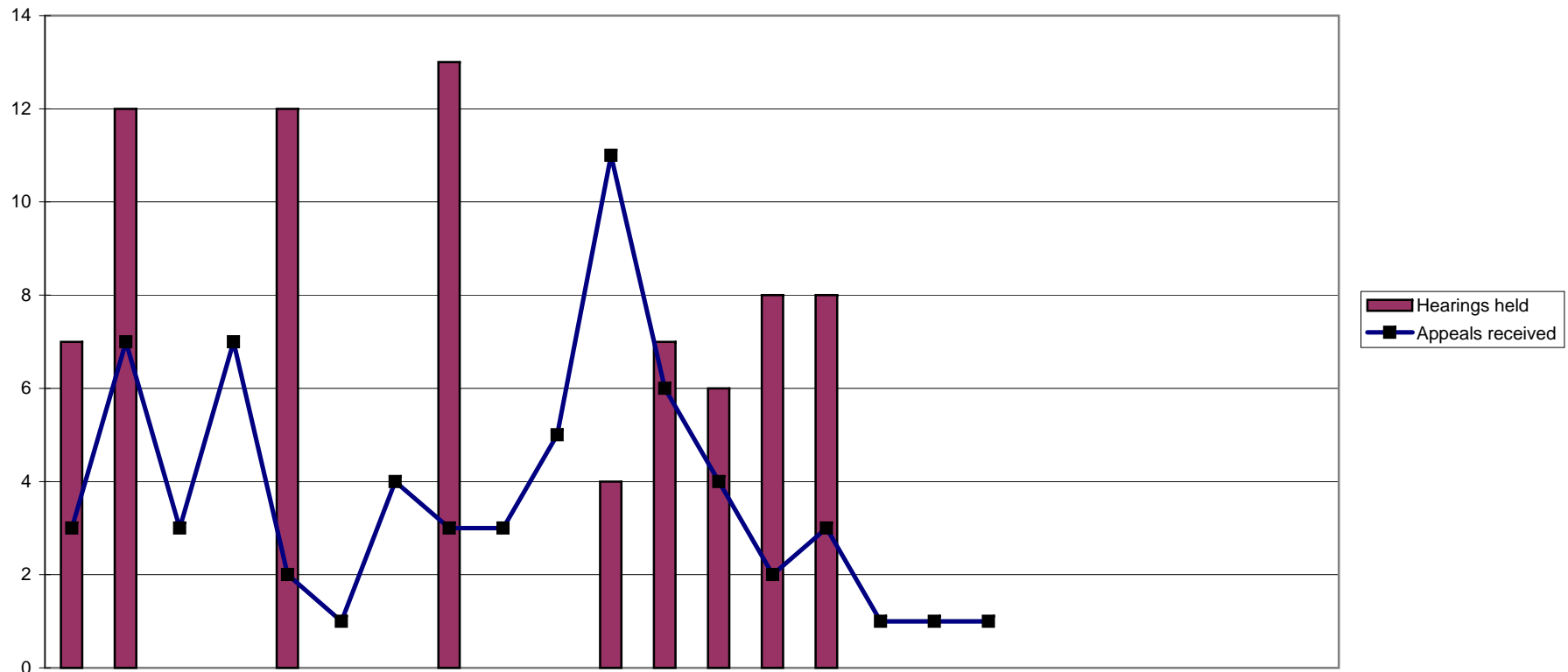


	2008												2009												2010												2005/6	2006/7	2007/8	2008/9	09/10			
	Apr	May	Jun	Jul	Aug	Sep	Oct	Nov	Dec	Jan	Feb	Mar	Apr	May	Jun	Jul	Aug	Sep	Oct	Nov	Dec	Jan	Feb	Mar	Apr	May	Jun	Jul	Aug	Sep	Oct	Nov	Dec	Jan	Feb	Mar	FYE	FYE	FYE	FYE	YTD			
Conduct & Comptence Panel																																												
Arts therapists	8	8	8	8	9	9	5	6	7	7	7	11	12	13	6	6	7	3	0	1	8	11	3																					
Biomedical scientists	9	9	10	12	12	13	15	16	14	18	17	12	15	16	16	13	14	11	7	9	7	12	11																					
Chiropodists & podiatrists	9	11	11	11	13	14	11	14	16	17	17	15	16	15	17	18	18	17	13	12	12	15	17																					
Clinical scientists	5	5	6	6	7	7	7	6	6	6	4	4	4	4	3	3	3	3	1	0	3	4	3																					
Dietitians	4	4	3	3	3	4	5	5	4	4	2	2	2	2	2	2	2	3	3	1	4	2	3																					
Occupational therapists	17	17	16	19	18	19	17	18	17	21	22	25	26	27	26	27	27	22	12	19	19	25	22																					
ODPs	19	20	19	18	19	16	16	15	16	20	19	15	19	22	25	25	23	22	8	9	18	15	22																					
Orthoptists	0	0	0	0	1	1	1	1	1	1	1	1	1	1	1	0	1	0	0	0	0	1	0																					
Paramedics	44	43	42	46	47	42	45	49	46	43	40	40	40	40	43	46	47	48	29	40	45	40	48																					
Physiotherapists	28	29	34	31	35	34	34	38	35	35	28	30	29	30	34	27	32	30	14	16	28	30	30																					
Practitioner psychologists*																		0	10	7						7																		
Prosthetists & orthotists	0	0	0	0	0	0	0	1	1	1	1	1	1	1	1	1	1	1	4	0	0	1	1																					
Radiographers	24	22	20	19	26	24	24	24	18	17	14	13	11	14	16	16	17	22	7	14	23	13	22																					
SLTs	4	6	7	7	9	10	12	13	13	10	8	8	8	7	8	6	5	5	7	3	4	8	5																					
Total - Conduct & Comptence	171	174	176	180	199	193	192	206	194	200	180	177	184	192	198	190	207	194	105	124	171	177	194																					
Health Panel																																												
Arts therapists	0	0	0	0	0	0	0	0	0	0	0	0	0	0	0	0	0	0	0	0	0	0	0																					
Biomedical scientists	0	0	0	1	1	1	1	2	2	2	2	1	1	1	1	1	1	1	2	1	0	1	1																					
Chiropodists & podiatrists	0	0	0	0	0	0	0	0	0	0	0	0	1	1	1	1	1	1	0	0	0	0	1																					
Clinical scientists	0	0	0	0	0	0	0	0	0	0	0	0	0	0	0	0	0	0	0	0	0	0	0																					
Dietitians	0	0	0	0	0	0	0	0	0	0	0	0	0	0	0	0	0	0	0	0	0	0	0																					
Occupational therapists	1	1	1	1	1	1	1	1	1	1	1	1	1	0	0	0	0	1	2	2	0	1	1																					
ODPs	0	0	0	0	0	0	0	0	0	1	0	0	0	2	2	2	2	2	1	2	0	0	2																					
Orthoptists	1	1	1	1	1	1	0	0	0	0	0	0	0	0	0	0	0	0	0	0	1	0	0																					
Paramedics	0	0	0	0	0	0	0	0	0	0	0	0	0	0	1	1	1	1	0	1	0	0	1																					
Physiotherapists	0	0	0	0	0	0	1	1	1	1	1	1	1	1	1	1	1	1	2	0	0	1	1																					
Practitioner psychologists*																		0	0	0						0																		
Prosthetists & orthotists	0	0	0	0	0	0	0	0	0	0	0	0	0	0	0	0	0	0	0	0	0	0	0																					
Radiographers	2	2	2	2	2	2	2	1	2	2	1	1	1	1	1	1	1	0	1	0	2	1	0																					
SLTs	1	1	1	1	1	1	1	1	1	1	1	1	1	1	1	1	1	1	0	0	1	1	1																					
Total - Health	5	5	5	6	6	6	6	6	7	8	6	5	6	7	8	8	8	8	8	6	4	5	8																					

Page 16 contd Cases Pending: Review Hearings April 2008 - March 2010

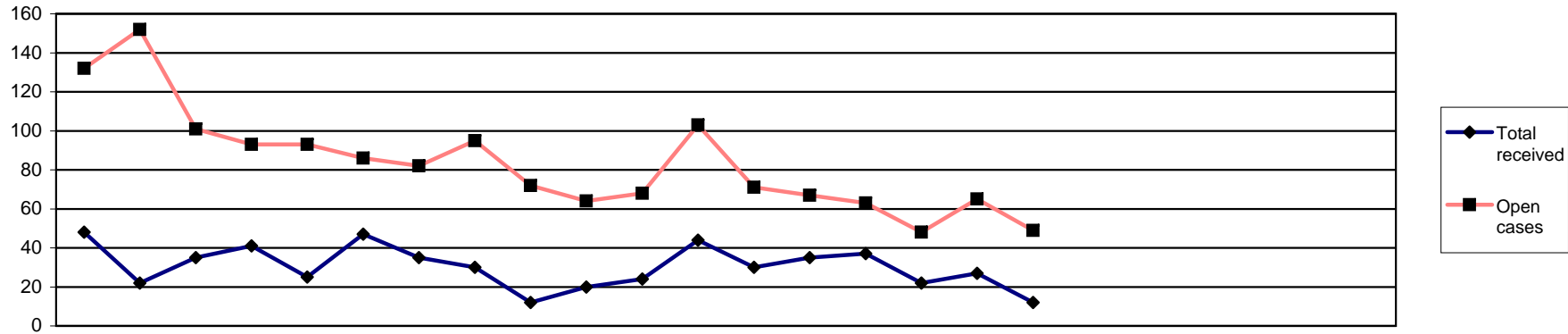
Review Hearing	2008			2009									2010						2005/6	2006/7	2007/8	2008/9	09/10							
	Apr	May	Jun	Jul	Aug	Sep	Oct	Nov	Dec	Jan	Feb	Mar	Apr	May	Jun	Jul	Aug	Sep	Oct	Nov	Dec	Jan	Feb	Mar	FYE	FYE	FYE	FYE	YTD	
Arts therapists	0	0	0	0	0	0	0	0	0	0	0	0	0	0	0	0	0								0	0	0	0	0	
Biomedical scientists	5	5	5	5	5	5	5	5	5	5	4	4	4	3	4	5	5	6								5	6	5	4	6
Chiropodists & podiatrists	5	5	4	4	4	4	3	3	3	4	4	5	5	6	6	5	5	5								3	5	5	5	5
Clinical scientists	2	2	2	2	2	2	2	2	2	2	2	2	2	2	2	2	2	2								1	2	2	2	2
Dietitians	2	2	3	3	3	3	3	3	3	3	3	3	3	3	3	3	3	3								2	4	2	3	3
Occupational therapists	20	21	19	19	18	19	19	19	19	17	17	16	16	15	16	17	16	17								5	10	20	16	17
ODPs	3	3	3	3	4	4	4	5	4	4	4	6	7	8	8	7	6	6								1	2	3	6	6
Orthoptists	0	0	0	0	0	0	0	0	0	0	0	0	0	0	0	0	0	0								0	0	0	0	0
Paramedics	15	15	14	13	14	14	10	10	12	12	12	12	13	11	11	11	9	11								4	9	15	12	11
Physiotherapists	30	30	29	29	29	26	27	25	28	29	28	27	27	27	24	27	26	25								18	23	30	27	25
Practitioner psychologists*																0	0	3												3
Prosthetists & orthotists	1	1	1	1	1	1	1	1	1	1	1	1	1	1	1	1	1	1								0	1	1	1	1
Radiographers	4	4	5	6	5	5	6	7	11	11	11	10	10	10	12	12	12	14								2	3	3	10	14
SLTs	5	5	5	5	5	6	5	5	5	5	6	4	4	4	4	4	4	4								3	4	4	4	4
Total - Review hearing	92	93	90	90	90	89	85	85	93	93	92	90	92	90	91	94	89	97								44	69	90	90	97

* Practitioner psychologists section of register opened 1st July 2009



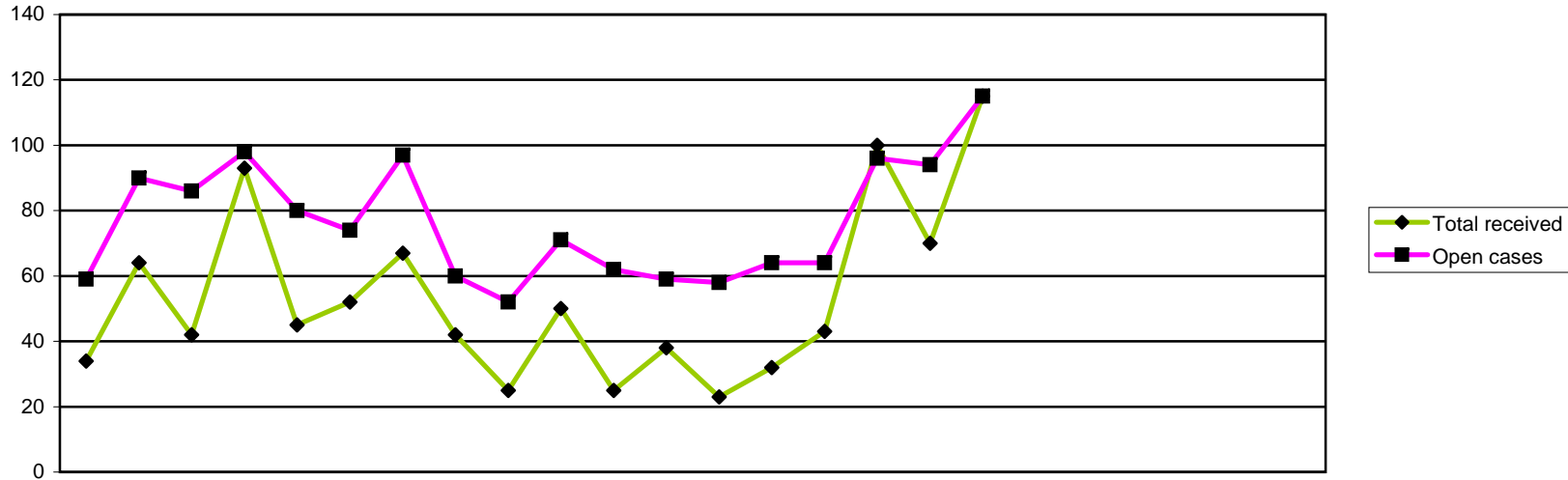
	2008			2009									2010												
	Apr	May	Jun	Jul	Aug	Sep	Oct	Nov	Dec	Jan	Feb	Mar	Apr	May	Jun	Jul	Aug	Sep	Oct	Nov	Dec	Jan	Feb	Mar	
Appeals received	3	7	3	7	2	1	4	3	3	5	11	6	4	2	3	1	1	1							
Reviewed	7	12	0	0	12	0	0	13	0	0	4	7	8	9	8	0	0	0							
Hearings held	7	12	0	0	12	0	0	13	0	0	4	7	6	8	8	0	0	0							
Adjourned/postponed	1	3	0	0	3	0	0	0	0	0	2	0	2	1	0	0	0	0							
Withdrawn	0	1	0	0	0	1	0	0	0	0	0	0	0	0	0	0	0	0							
Allowed	4	2	0	0	5	0	0	6	0	0	2	4	1	5	1	0	0	0							
Dismissed	2	4	0	0	2	0	0	5	0	0	2	2	0	1	3	0	0	0							
Substitute decision	0	0	0	0	0	0	0	0	0	0	0	0	0	0	1	0	0	0							
Remit to ETC	0	2	0	0	2	0	0	2	0	0	0	1	5	2	3	0	0	0							
Current active cases	20	20	23	24	19	19	23	13	16	21	28	29	22	16	7	9	10	11							

2005/6 FYE	2006/7 FYE	2007/8 FYE	2008/9 FYE	09/10 YTD
91	104	41	55	12
266	90	65	55	25
266	90	65	55	22
19	20	10	9	3
13	16	15	2	0
128	33	29	23	7
88	29	31	17	4
0	0	0	0	1
31	6	4	7	10



	2008			2009									2010												
	Apr	May	Jun	Jul	Aug	Sep	Oct	Nov	Dec	Jan	Feb	Mar	Apr	May	Jun	Jul	Aug	Sep	Oct	Nov	Dec	Jan	Feb	Mar	
Public	10	1	4	15	9	4	0	2	2	2	1	6	0	1	13	3	2	2							
Police	5	5	3	4	0	8	4	7	2	3	1	2	3	2	4	3	4	3							
HPC	0	0	0	0	0	0	0	1	0	0	1	1	0	0	0	0	0	0							
Anonymous	5	2	4	6	2	6	9	0	0	3	4	6	2	2	4	1	4	2							
Professional	28	14	24	16	14	29	22	20	8	12	17	29	25	29	16	15	16	5							
Total received	48	22	35	41	25	47	35	30	12	20	24	44	30	35	37	22	27	12							
Visits	0	0	0	0	0	0	0	0	1	0	0	0	0	1	1	0	1	0							
Open cases	132	152	101	93	93	86	82	95	72	64	68	103	71	67	63	48	65	49							

2005/6	2006/7	2007/8	2008/9	09/10
FYE	FYE	FYE	FYE	YTD
53	21	42	56	21
31	38	27	44	19
10	10	6	3	0
50	78	38	47	15
225	137	103	233	106
369	284	216	383	161
			3	3



		2008			2009								2010						2005/6	2006/7	2007/8	2008/9	09/10							
		Apr	May	Jun	Jul	Aug	Sep	Oct	Nov	Dec	Jan	Feb	Mar	Apr	May	Jun	Jul	Aug	Sep	Oct	Nov	Dec	Jan	Feb	Mar	FYE	FYE	FYE	FYE	YTD
Received	Renewal	4	14	9	8	2	0	4	2	0	0	0	0	0	1	11	9	14	54	36	27	81	43	89						
	Readmission	7	14	15	6	5	8	5	7	9	6	3	9	2	5	3	6	5	5	33	40	34	94	26						
	Admission	7	12	8	46	25	30	42	15	10	27	10	16	10	10	15	60	37	36	165	150	158	248	168						
	Self referral	16	24	10	33	13	14	16	18	6	17	12	13	11	16	14	25	14	20	54	86	158	192	100						
Total received		34	64	42	93	45	52	67	42	25	50	25	38	23	32	43	100	70	115	288	303	431	577	383						
Considered	Considered by panel	18	34	24	39	40	49	38	55	23	21	35	23	16	21	23	37	52	30	n/a	n/a	256	399	179						
	Referred to FTP	0	15	2	2	1	5	4	2	3	1	4	2	2	2	5	6	6	1	n/a	n/a	37	41	22						
	Admission rejected	0	0	0	0	1	1	0	1	1	0	2	0	0	1	0	0	0	0	n/a	n/a	2	6	1						
	Readmission rejected	0	0	0	1	0	1	0	1	3	0	1	1	0	3	0	0	0	0	n/a	n/a	3	8	3						
	Renewal rejected	0	0	0	0	0	1	1	0	0	0	0	0	0	0	0	0	0	0	n/a	n/a	0	2	0						
	Not referred to FTP	5	9	4	7	9	5	12	8	4	5	6	8	2	6	4	5	3	4	n/a	n/a	34	82	24						
	Admission accepted	10	4	7	25	26	31	19	36	11	10	18	7	10	7	11	24	37	22	n/a	n/a	150	204	111						
	Readmission accepted	3	6	10	2	2	5	2	7	1	5	3	5	2	2	2	2	6	2	n/a	n/a	19	51	16						
	Renewal accepted	0	0	1	2	1	0	0	0	0	0	1	0	0	0	1	0	0	1	n/a	n/a	1	5	2						
	Closed before panel														6	6	16	28	10	15					81					
Open cases		59	90	86	98	80	74	97	60	52	71	62	59	58	64	64	96	94	115	n/a	n/a	75	75	115						