

INTRODUCTION

The HCPC has assessed the length of time that UK route registrants remained registered for following their first registration. Registrants who came through the UK route must have completed an approved training course in a UK institution. This analysis is hoped to contribute to wider workforce planning efforts.

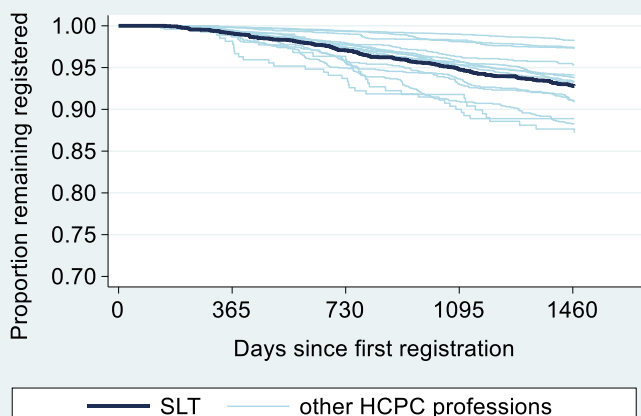
METHODS

All new UK route Speech & Language Therapists (SLT) who made their first registration between 01 July 2013 and 30 June 2017 were included in the analysis and their registration status at least four years later determined (n=2,922). The Kaplan-Meier method was used to estimate the percent remaining registered and the corresponding 95% confidence intervals for those estimates.

RESULTS

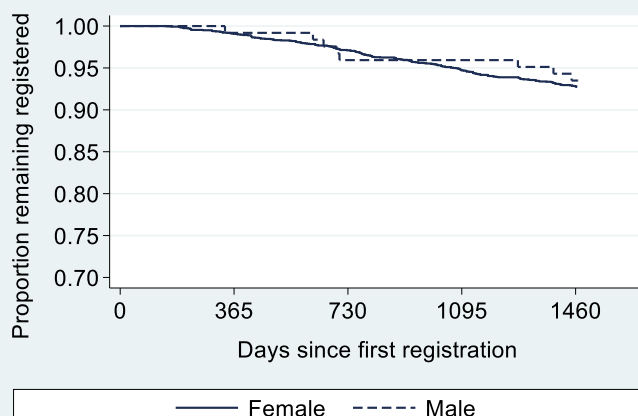
Overall retention

After two years 97.1% (95% CI: 96.4 to 97.6) of new SLT remained on the HCPC register and after four years 92.8% (95% CI: 91.8 to 93.7) remained registered.



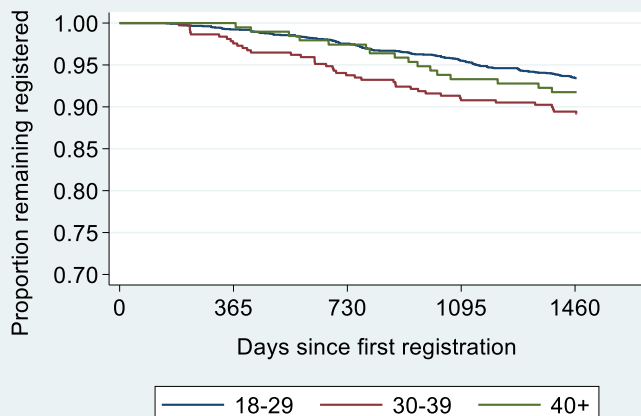
Gender / Sex

There was no meaningful difference between the proportions of females (92.8%) and of males (93.5%) remaining registered after four years. The majority of new SLT registrants were female (96%).



Age

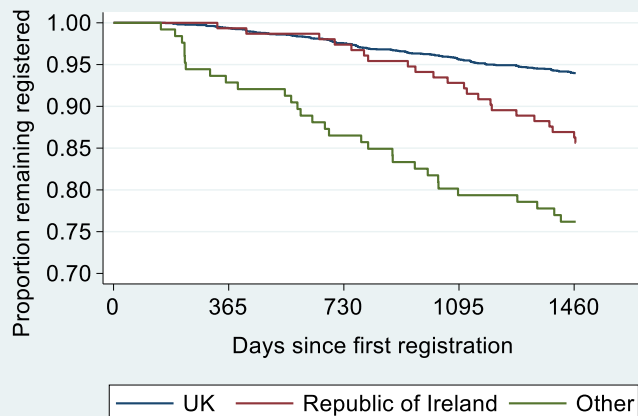
The retention rate for 30-39 year olds was significantly lower than for 18-29 year olds. The majority (81%) of new SLT registrants were aged 18-29, with 13% aged 30-39 and 7% aged 40+.



Nationality

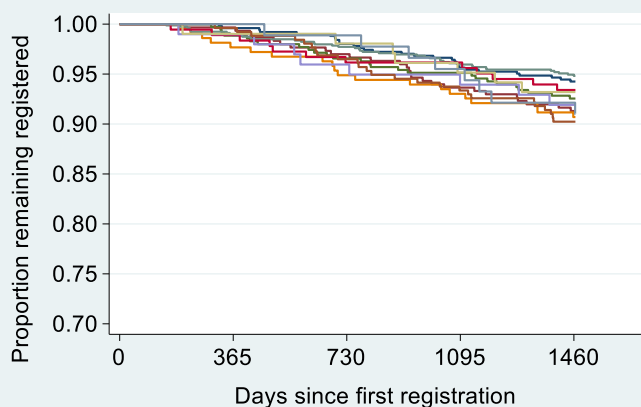
Retention varied considerably by nationality:

- UK = 94.0% retention (90% of registrants)
- Republic of Ireland = 86.3% (5% of registrants)
- Other nationalities = 76.2% (4% of registrants)

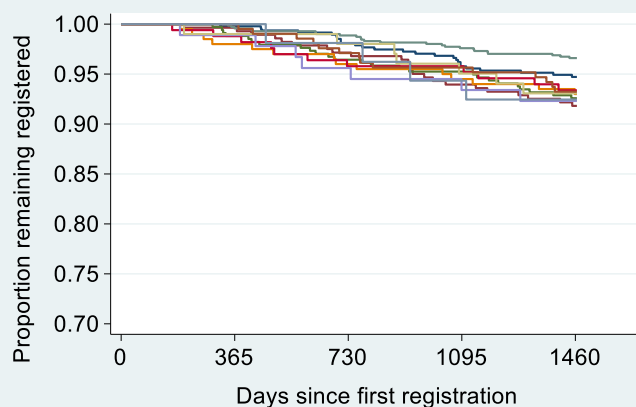


Location of training course provider

Retention rates varied between locations of training course providers with a 4.6% gap between the location with the highest rate (London, 94.8%) and the location with the lowest rate (Scotland, 90.2%).



Restricting the analysis of training provider location to new UK route registrants of UK nationality made little difference to the gap between the location with the highest rate (London, 96.6%) and the location with the lowest rate (North West, 91.8%).



Location of institution providing qualification used for registration	n	% total	% UK nationality	Retention: all nationalities		Retention: UK nationality only	
				%	95% CI	%	95% CI
North East & Yorkshire	505	17.5	93.7	94.3	91.8 to 96.0	94.7	92.3 to 96.4
North West	299	10.4	94.0	91.3	87.5 to 94.0	91.8	87.9 to 94.5
Midlands	349	12.1	96.6	92.6	89.3 to 94.9	92.6	89.2 to 94.9
East of England	215	7.4	93.0	90.7	86.0 to 93.9	93.0	88.5 to 95.8
London	791	27.4	89.3	94.8	93.0 to 96.2	96.6	95.0 to 97.7
South East	183	6.3	91.3	93.4	88.7 to 96.2	93.4	88.4 to 96.3
South West	99	3.4	91.9	91.9	84.5 to 95.9	92.3	84.5 to 96.3
Wales	103	3.6	98.1	93.2	86.3 to 96.7	93.1	86.0 to 96.6
Scotland	256	8.9	80.9	90.2	85.9 to 93.3	93.2	88.9 to 95.9
Northern Ireland	89	3.1	59.6	92.1	84.2 to 96.2	92.5	81.1 to 97.1

CONCLUSIONS

The vast majority of new UK route Speech & Language Therapists remained on the HCPC register four years after their first registration with around 1 in 14 having left by then.

Variation was observed in nationality, with UK route registrants of non-UK nationalities having lower retention rates than UK route registrants of UK nationality and in age, with the youngest registrants having the highest retention rates.

There was relatively little variation in location of training provider.

For further information see www.hcpc-uk.org/insights/